

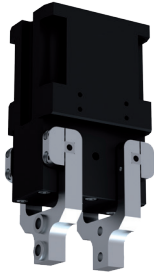
# 2-JAW RADIAL GRIPPER

## INSTALLATION SIZE GG4040

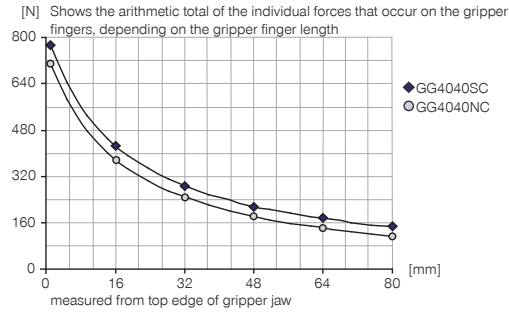
1

Installation size GG4040 / 2-jaw radial gripper / pneumatic / Grippers

### ▶ PRODUCT SPECIFICATIONS

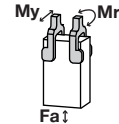


#### ▶ Gripping force diagram



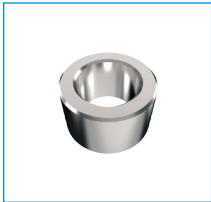
#### ▶ Forces and moments

Displays static forces and moments that can also have an effect, besides the gripping force.



Mr [Nm]	19
My [Nm]	19
Fa [N]	180

### ▶ INCLUDED IN DELIVERY



Centering Disc

DST40800



Stroke adjustment screw

HES0015



Flow Control Valves - with Swivel joint

DRVM5X4

### ▶ RECOMMENDED ACCESSORIES



Mounting block

KB8-48



Inductive proximity switch - Connector M8

NJ8-E2S



Magnetic field sensor Angled Cable 0,3 m - Connector M8

MFS103SKHC



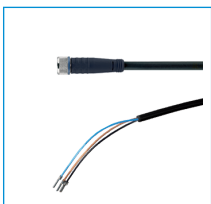
Magnetic field sensor Straight Cable 0,3 m - Connector M8

MFS204SKHC



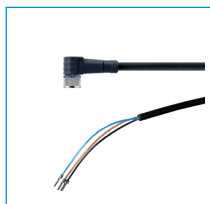
2-Position-Sensor Cable 0,3 m - Connector M8

MFSP2SKHC-02



Plug-in connector Straight Cable 5m - Socket M8 (female)

KAG500



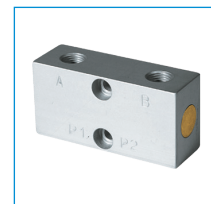
Plug-in connector Angled Cable 5m - Socket M8 (female)

KAW500



Straight Fittings - Quick Connect Style

GVM5



Pressure Safety Valve

DSV1-8



Plug-in connector customizable Straight - Connector M8

S8-G-3

Order no.	▶ Technical Data*	
	GG4040NC	GG4040SC
Stroke per jaw [°]	90	20
Gripping moment in closing at 0° [Nm]	13	15
Gripping moment secured by spring min. [Nm]	6	8.5
Gripping force in closing [N]	700	800
Length of the gripper fingers max. [mm]	85	85
Permissible weight per jaw max [kg]	0.12	0.12
Closing time [s]	0.060	0.02
Opening time [s]	0.11	0.06
Repetition accuracy +/- [mm]	0.05	0.05
Operating pressure min. [bar]	4	4
Operating pressure max. [bar]	8	8
Operating temperature min. [°C]	5	5
Operating temperature max. [°C]	+80	+80
Air volume per cycle [cm³]	24	18
Weight [kg]	0.5	0.5

\*All data measured at 6 bar

