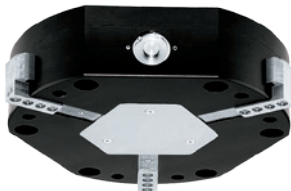


# 3-JAW CONCENTRIC GRIPPERS WITH LONG STROKE INSTALLATION SIZE GD530

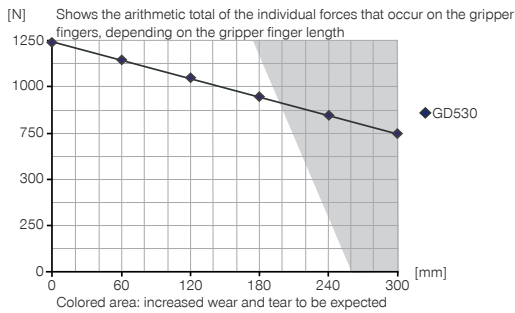
1

Installation size GD530 / 3-Jaw Concentric Grippers with Long Stroke / pneumatic / Grippers

## ▶ PRODUCT SPECIFICATIONS

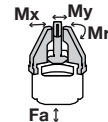


### ▶ Gripping force diagram



### ▶ Forces and moments

Displays static forces and moments that can also have an effect, besides the gripping force.



Mr [Nm]	300
Mx [Nm]	200
My [Nm]	300
Fa [N]	8000

## ▶ INCLUDED IN DELIVERY



Mounting block

KB8K



Centering Disc

DST41600

## ▶ RECOMMENDED ACCESSORIES



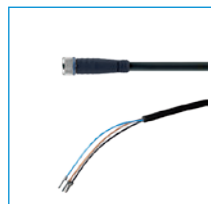
Inductive proximity switch - Cable 5 m

NJ8-E2



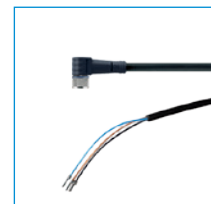
Inductive proximity switch - Connector M8

NJ8-E2S



Plug-in connector Straight Cable 5m - Socket M8 (female)

KAG500



Plug-in connector Angled Cable 5m - Socket M8 (female)

KAW500



Straight Fittings - Quick Connect Style

GV1-4X8



Angled Fittings - Quick Connect Style

WV1-4X8



Quick Exhaust Valve

DEV08



Pressure Safety Valve

DSV1-8



Plug-in connector customizable Straight - Connector M8

S8-G-3



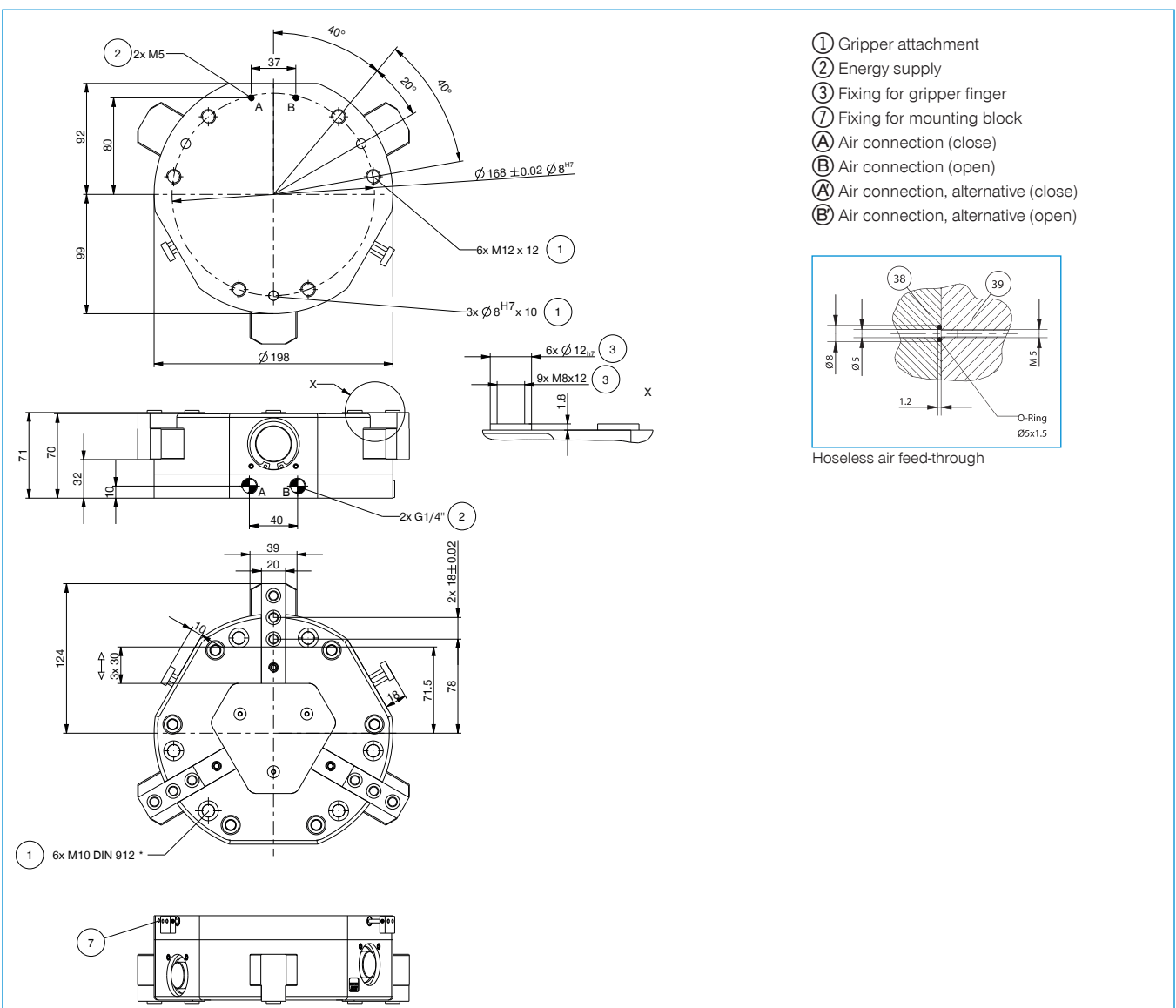
Plug-in connector customizable Straight - Connector M12

S12-G-3

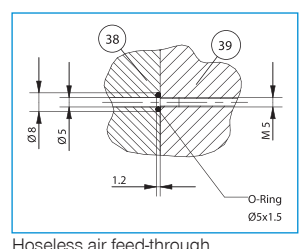
Order no.	GD530
Stroke per jaw [mm]	30
Gripping force in closing [N]	1300
Gripping force in opening [N]	1300
Closing time [s]	0.3
Opening time [s]	0.3
Repetition accuracy +/- [mm]	0.05
Operating pressure min. [bar]	3
Operating pressure max. [bar]	8
Operating temperature min. [°C]	5
Operating temperature max. [°C]	+80
Air volume per cycle [cm³]	170
Weight [kg]	7.4

\* All data measured at 6 bar

► Technical Data\*



- ① Gripper attachment
- ② Energy supply
- ③ Fixing for gripper finger
- ⑦ Fixing for mounting block
- A Air connection (close)
- B Air connection (open)
- A' Air connection, alternative (close)
- B' Air connection, alternative (open)



# 3-JAW CONCENTRIC GRIPPERS WITH LONG STROKE SERIES GD500

1

## ▶ PRODUCT ADVANTAGES



### “The flat”

- ▶ **Reduced installation height due to horizontal drive**  
Reduces the interference contours for your application
- ▶ **Proven T slot guide**  
This established and proven guiding technology stands for the highest process reliability like no other
- ▶ **Failure-free continuous operation**  
Our uncompromising „Made in Germany“ quality guarantees up to 10 million maintenance-free cycles

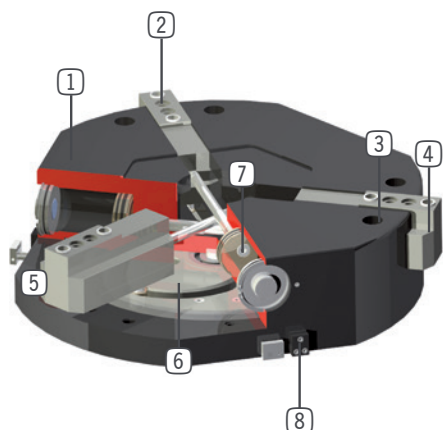
## ▶ THE BEST PRODUCT FOR YOUR APPLICATION



- ▶ **Our products welcome the challenge!**  
Extreme conditions, all over the world—our tried and tested components and systems give you endless possibilities.  
Find the best product for your specific use:  
[www.zimmer-group.de](http://www.zimmer-group.de)



## ► BENEFITS IN DETAIL



- ① **Robust, lightweight housing**
  - Hard-coated aluminum alloy
- ② **Removable centering sleeves**
  - quick and economical positioning of the gripper fingers
- ③ **Mounting and positioning**
- ④ **Gripper jaw**
  - ground, hardened steel
  - individual gripper finger mounting
- ⑤ **Precise T-Slot guide**
  - high forces and moments capacity
- ⑥ **Cam**
  - synchronized jaw movement
- ⑦ **Drive**
  - three double-acting pneumatic cylinders
- ⑧ **Mounting block**
  - mounting for inductive proximity switch

## ► SERIES CHARACTERISTICS



Number of installation sizes	3
Stroke per jaw	30 mm - 60 mm
Gripping force	1300 N - 2480 N
Weight	7,4 kg - 29 kg
AP class	3



10 million maintenance-free cycles (max.)



Inductive sensor



IP40