

# 3-JAW CONCENTRIC GRIPPERS

## INSTALLATION SIZE GD50

1

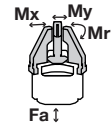
Installation size GD50 / 3-Jaw Concentric Grippers / pneumatic / Grippers

### ▶ PRODUCT SPECIFICATIONS



#### ▶ Forces and moments

Displays static forces and moments that can also have an effect, besides the gripping force.



Mr [Nm]	5
Mx [Nm]	5
My [Nm]	4
Fa [N]	100

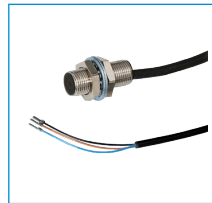
### ▶ RECOMMENDED ACCESSORIES



Straight Fittings - Quick Connect Style  
**GV1-8X8**



Rotation limiter  
**DB50**



Inductive proximity switch - Cable 5 m  
**NJ12-E2**



Inductive proximity switch - Connector M8  
**NJ12-E2S**



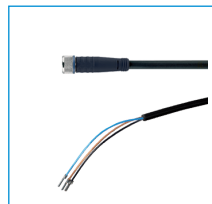
Stop Stroke Adjustment Screws  
**AI-M8X1-38**



Stop Stroke Adjustment Screws  
**AI-M8X1-53**



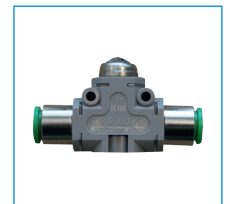
Plug-in connector Angled Cable 5m - Socket M8 (female)  
**KAW500**



Plug-in connector Straight Cable 5m - Socket M8 (female)  
**KAG500**



Inquiry for interim position  
**GF50**



Quick Exhaust Valve  
**DEV08**

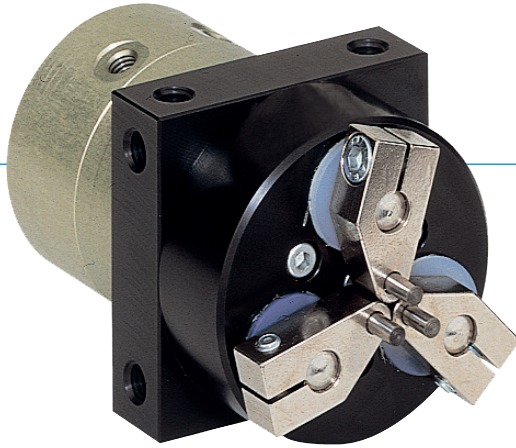


# 3-JAW CONCENTRIC GRIPPERS

## SERIES GD

1

### ▶ PRODUCT ADVANTAGES



#### “The flexible”

##### ▶ Largest stroke in small installation space

You can cover numerous application variants with just one gripper type

##### ▶ Gripper jaws included in the delivery

Reduces your design effort, manufacturing costs and setup time

##### ▶ Smooth stroke configuration

Using the optionally available stroke limit, you can customise the stroke to your application, even stroke sensing is possible

### ▶ THE BEST PRODUCT FOR YOUR APPLICATION



##### ▶ Our products welcome the challenge!

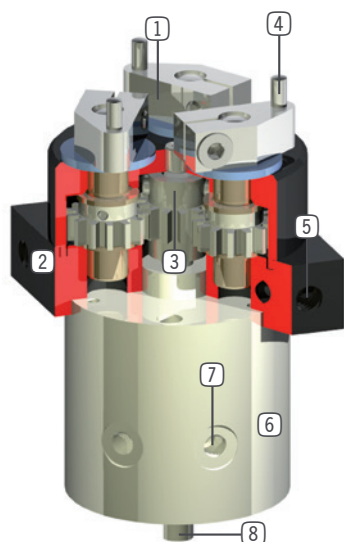
Extreme conditions, all over the world—our tried and tested components and systems give you endless possibilities.

Find the best product for your specific use:

[www.zimmer-group.de](http://www.zimmer-group.de)



## ► BENEFITS IN DETAIL



- ① **Gripping movement on rotation**
  - for various workpiece diameters
- ② **Robust, lightweight housing**
  - Hard-coated aluminum alloy
- ③ **Planetary transmission**
  - synchronized the movement of the gripper jaws
- ④ **Standard pins serve as gripper jaw**
- ⑤ **Mounting and positioning**
  - mounting possible from several sides for versatile positioning
- ⑥ **Drive**
  - double-acting pneumatic cylinder
- ⑦ **Energy supply**
  - possible radial and axial
- ⑧ **Shaft projection**
  - for accessory assembly e.g. sensors

## ► SERIES CHARACTERISTICS



Number of installation sizes	3
Stroke per jaw	120° - 180°
Gripping force	24 N - 530 N
Weight	0,08 kg - 2 kg
AP class	2



10 million maintenance-free cycles (max.)



Inductive sensor



IP40