

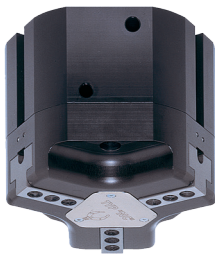
3-JAW CONCENTRIC GRIPPERS

INSTALLATION SIZE GD312

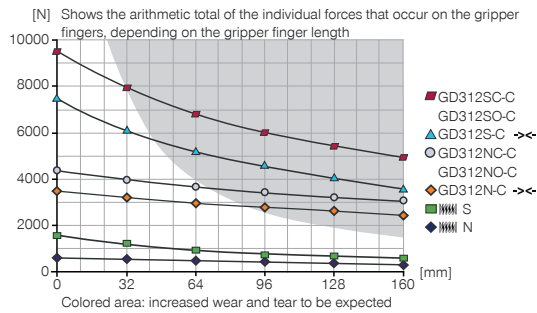
1

Installation size GD312 / 3-Jaw Concentric Grippers / pneumatic / Grippers

▶ PRODUCT SPECIFICATIONS

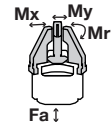


▶ Gripping force diagram



▶ Forces and moments

Displays static forces and moments that can also have an effect, besides the gripping force.



Mr [Nm]	100
Mx [Nm]	120
My [Nm]	120
Fa [N]	3200

▶ INCLUDED IN DELIVERY



Mounting block

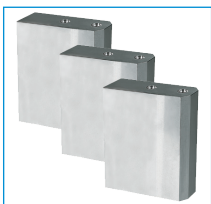
KB8-32



Centering Disc

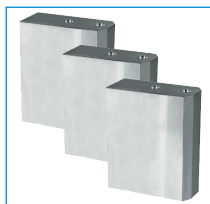
DST41000

▶ RECOMMENDED ACCESSORIES



Universal Jaw Aluminium

UB312



Universal Jaw Steel

UB312ST



Pressure piece N / S

ADS312N-S



Pressure piece NC / NO / SC / SO

ADS312C-O



Alternate proximity bracket

KHA312-B-8



Inductive proximity switch - Connector M8

NJ8-E2S



Magnetic field sensor Angled Cable 0,3 m - Connector M8

MFS103SKHC



Magnetic field sensor Straight Cable 0,3 m - Connector M8

MFS204SKHC



Straight Fittings - Quick Connect Style

GV1-8X6

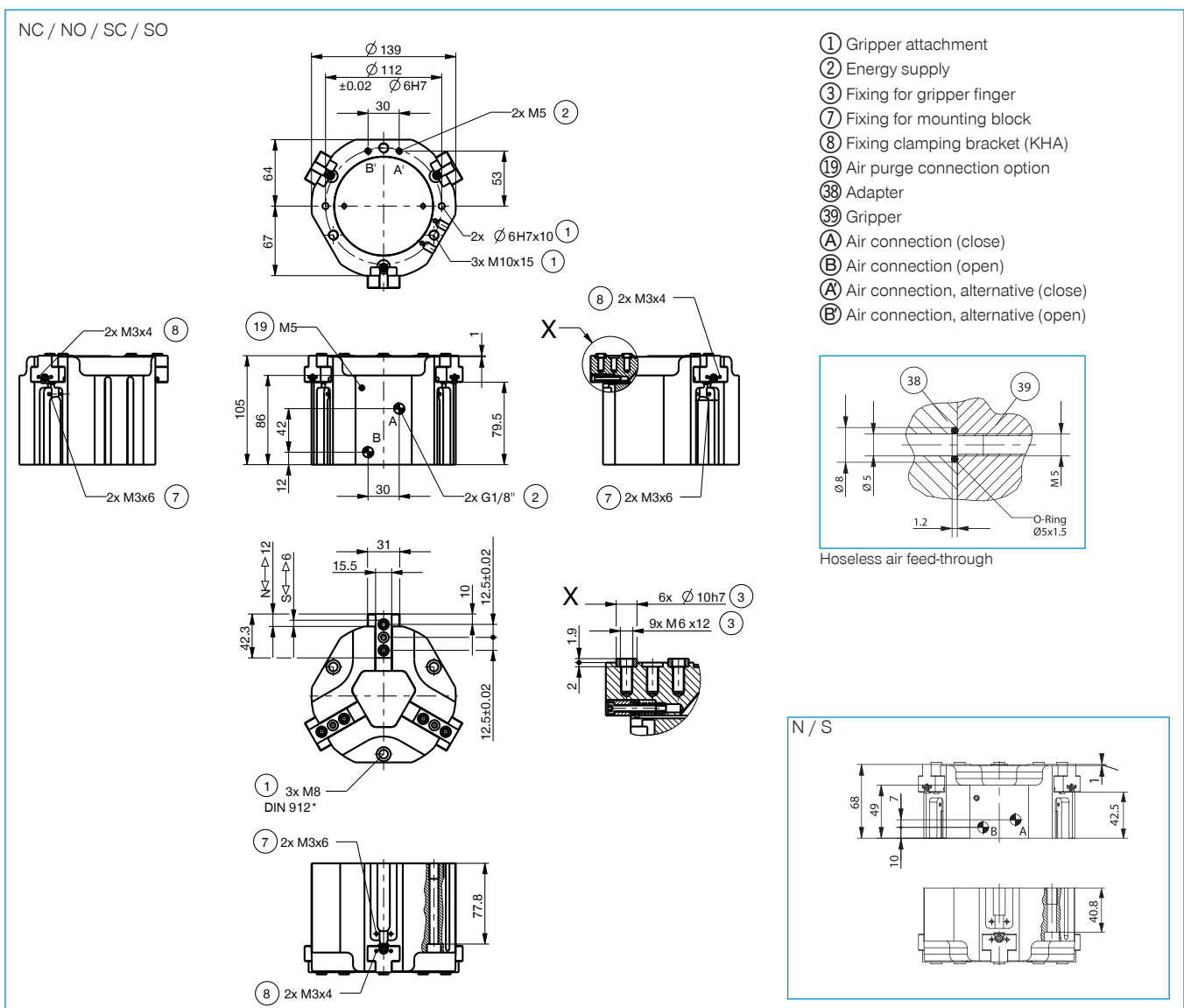


Pressure Safety Valve

DSV1-8

Order no.	Technical Data*					
	GD312N-C	GD312NC-C	GD312NO-C	GD312S-C	GD312SC-C	GD312SO-C
Stroke per jaw [mm]	12	12	12	6	6	6
Gripping force in closing [N]	3500	4150		7600	9000	
Gripping force in opening [N]	3600		4250	7850		9250
Gripping force secured by spring min. [N]		650	650		1400	1400
Closing time [s]	0.2	0.15	0.35	0.2	0.15	0.35
Opening time [s]	0.2	0.35	0.15	0.2	0.35	0.15
Repetition accuracy +/- [mm]	0.05	0.05	0.05	0.05	0.05	0.05
Operating pressure min. [bar]	2	4	4	2	4	4
Operating pressure max. [bar]	8	8	8	8	8	8
Operating temperature min. [°C]	5	5	5	5	5	5
Operating temperature max. [°C]	+80	+80	+80	+80	+80	+80
Air volume per cycle [cm³]	190	420	420	190	420	420
Weight [kg]	2.7	3.8	3.8	2.7	3.8	3.8

*All data measured at 6 bar



3-JAW CONCENTRIC GRIPPERS

SERIES GD300

1

Series GD300 / 3-Jaw Concentric Grippers / pneumatic / Grippers

▶ PRODUCT ADVANTAGES



“The economical”

▶ Concentration on the essentials

The most economic type of gripping: This is how you reduce your production costs

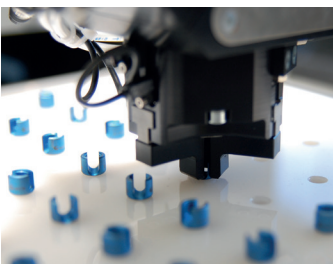
▶ Proven T slot guide

This established and proven guiding technology stands for the highest process reliability like no other

▶ Compact structure

Reduces the interference contours for your application

▶ THE BEST PRODUCT FOR YOUR APPLICATION



▶ Our products welcome the challenge!

Extreme conditions, all over the world—our tried and tested components and systems give you endless possibilities.

Find the best product for your specific use:

www.zimmer-group.de

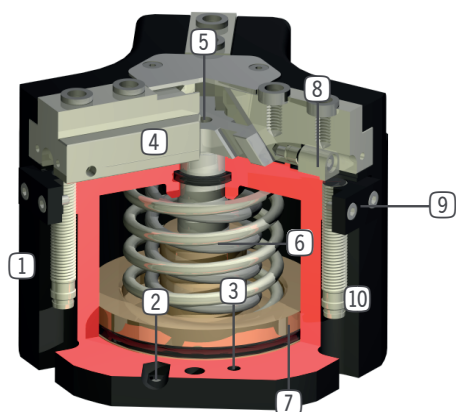
HOW TO ORDER CORRECTLY

▶ The product order numbers are arranged according to this diagram:

Order no.	GD304	<input type="checkbox"/>	<input type="checkbox"/>	-C
Long stroke		N		
High force		S		
For external gripping, self-locking, spring closing			C	
For internal gripping, self-locking, spring opening			O	



► BENEFITS IN DETAIL



- ① **Robust, lightweight housing**
- Hard-coated aluminum alloy
- ② **Energy supply**
- possible from several sides
- ③ **Mounting and positioning**
- mounting possible from several sides for versatile positioning
- ④ **Gripper jaw**
- individual gripper finger mounting
- ⑤ **Wedge hook mechanism**
- synchronized the movement of the gripper jaws
- high force transfer
- ⑥ **Integrated gripping force safety device**
- spring integrated into cylinder as energy storage
- ⑦ **Position sensing**
- permanent magnet for direct monitoring of piston movement
- ⑧ **Integrated, adjustable switch cam**
- for direct position sensing of the gripper jaw
- ⑨ **Mounting block**
- mounting for inductive proximity switch (10)

► SERIES CHARACTERISTICS



Number of installation sizes	9
Stroke per jaw	3 mm - 30 mm
Gripping force	200 N - 34700 N
Weight	0,13 kg - 24 kg
AP class	3



10 million maintenance-free cycles (max.)



High-strength S



Magnetic field sensor



Spring closing C



Inductive sensor



Purged air



Spring opening O



IP40