

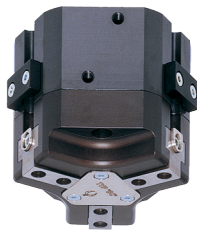
# 3-JAW CONCENTRIC GRIPPERS

## INSTALLATION SIZE GD306

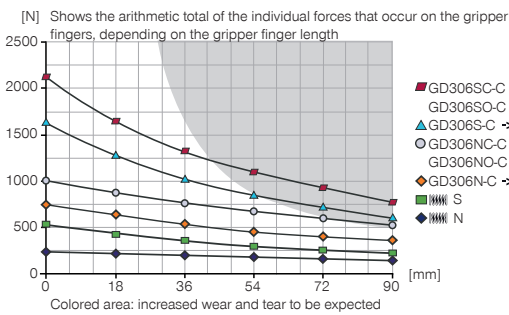
1

Installation size GD306 / 3-Jaw Concentric Grippers / pneumatic / Grippers

### ▶ PRODUCT SPECIFICATIONS

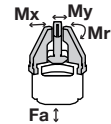


#### ▶ Gripping force diagram



#### ▶ Forces and moments

Displays static forces and moments that can also have an effect, besides the gripping force.



Mr [Nm]	35
Mx [Nm]	50
My [Nm]	45
Fa [N]	1200

### ▶ INCLUDED IN DELIVERY



Mounting block

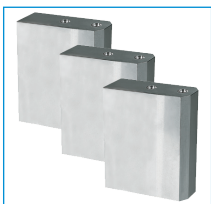
KB3-39



Centering Disc

DST40600

### ▶ RECOMMENDED ACCESSORIES



Universal Jaw Aluminium

UB306



Universal Jaw Steel

UB306ST



Pressure piece N / S

ADS306N-S



Pressure piece NC / NO / SC / SO

ADS306C-O



Inductive proximity switch - Connector M8

NJ8-E2S



Magnetic field sensor Angled Cable 0,3 m - Connector M8

MFS103SKHC



Magnetic field sensor Straight Cable 0,3 m - Connector M8

MFS204SKHC



Straight Fittings - Quick Connect Style

GVM5



Angled Fittings - Quick Connect Style

WVM5



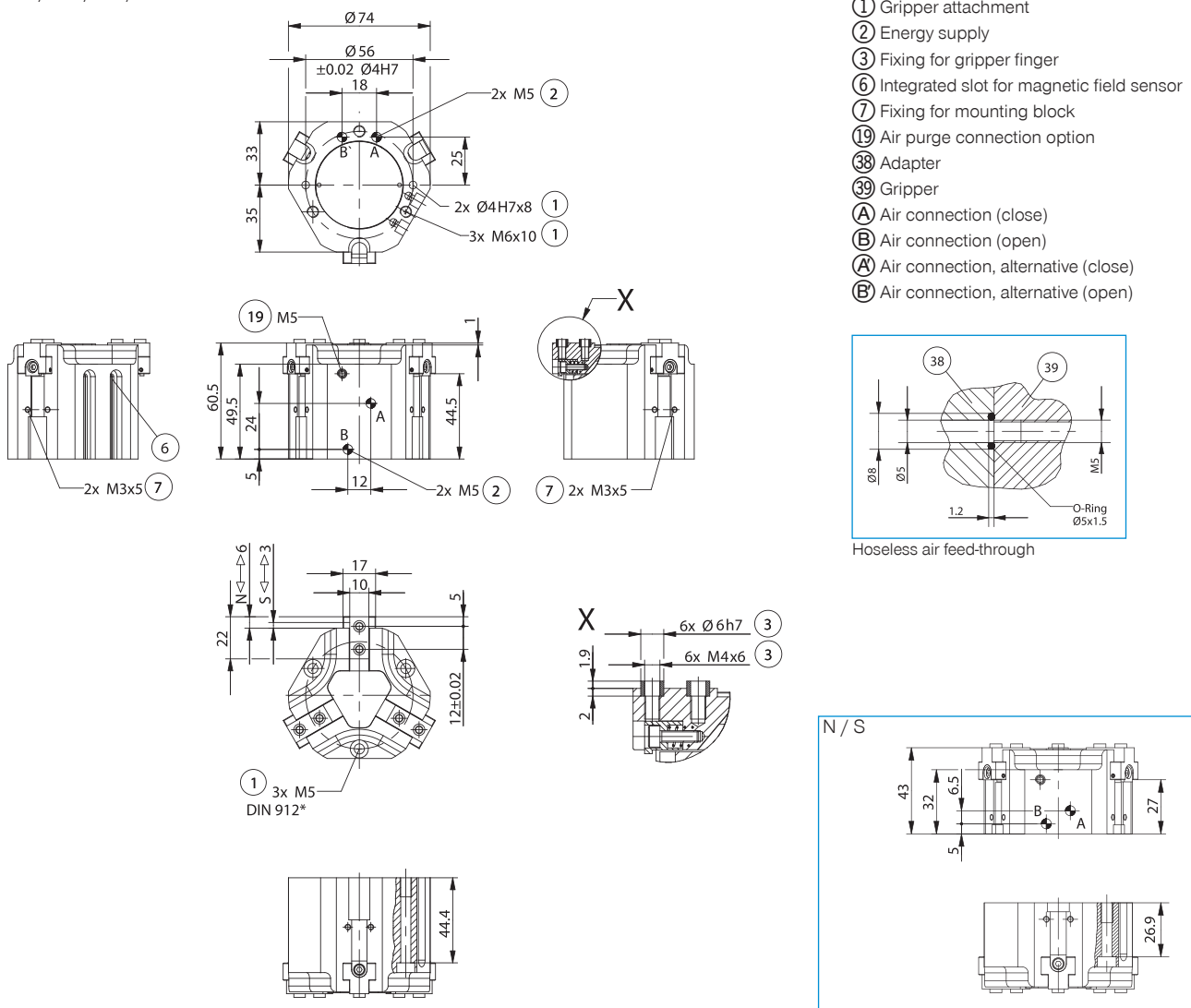
Pressure Safety Valve

DSV1-8

Order no.	Technical Data*					
	GD306N-C	GD306NC-C	GD306NO-C	GD306S-C	GD306SC-C	GD306SO-C
Stroke per jaw [mm]	6	6	6	3	3	3
Gripping force in closing [N]	750	1000		1600	2150	
Gripping force in opening [N]	800		1050	1750		2300
Gripping force secured by spring min. [N]		250	250		550	550
Closing time [s]	0.03	0.03	0.05	0.03	0.03	0.05
Opening time [s]	0.03	0.05	0.03	0.03	0.05	0.03
Repetition accuracy +/- [mm]	0.05	0.05	0.05	0.05	0.05	0.05
Operating pressure min. [bar]	2	4	4	2	4	4
Operating pressure max. [bar]	8	8	8	8	8	8
Operating temperature min. [°C]	5	5	5	5	5	5
Operating temperature max. [°C]	+80	+80	+80	+80	+80	+80
Air volume per cycle [cm³]	21.5	48	48	21.5	48	48
Weight [kg]	0.5	0.65	0.65	0.5	0.65	0.65

\*All data measured at 6 bar

NC / NO / SC / SO



- ① Gripper attachment
- ② Energy supply
- ③ Fixing for gripper finger
- ⑥ Integrated slot for magnetic field sensor
- ⑦ Fixing for mounting block
- ⑰ Air purge connection option
- ⑳ Adapter
- ㉑ Gripper
- A Air connection (close)
- B Air connection (open)
- A Air connection, alternative (close)
- B Air connection, alternative (open)

# 3-JAW CONCENTRIC GRIPPERS

## SERIES GD300

1

Series GD300 / 3-Jaw Concentric Grippers / pneumatic / Grippers

### ▶ PRODUCT ADVANTAGES



#### “The economical”

##### ▶ Concentration on the essentials

The most economic type of gripping: This is how you reduce your production costs

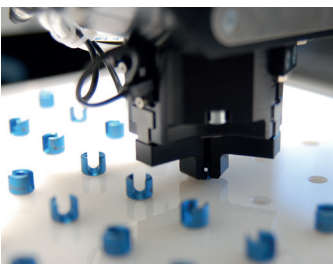
##### ▶ Proven T slot guide

This established and proven guiding technology stands for the highest process reliability like no other

##### ▶ Compact structure

Reduces the interference contours for your application

### ▶ THE BEST PRODUCT FOR YOUR APPLICATION



##### ▶ Our products welcome the challenge!

Extreme conditions, all over the world—our tried and tested components and systems give you endless possibilities.

Find the best product for your specific use:

[www.zimmer-group.de](http://www.zimmer-group.de)

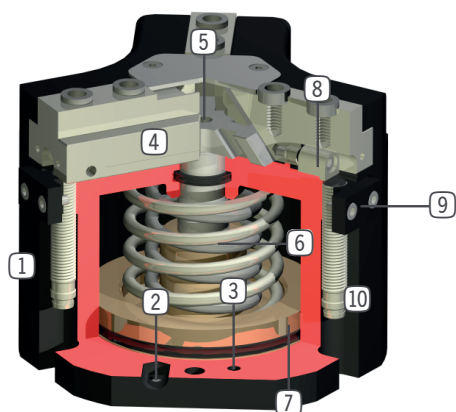
#### HOW TO ORDER CORRECTLY

▶ The product order numbers are arranged according to this diagram:

<b>Order no.</b>	<b>GD304</b>	<input type="checkbox"/>	<input type="checkbox"/>	<b>-C</b>
Long stroke		<b>N</b>		
High force		<b>S</b>		
For external gripping, self-locking, spring closing			<b>C</b>	
For internal gripping, self-locking, spring opening			<b>O</b>	



## BENEFITS IN DETAIL



- ① **Robust, lightweight housing**  
- Hard-coated aluminum alloy
- ② **Energy supply**  
- possible from several sides
- ③ **Mounting and positioning**  
- mounting possible from several sides for versatile positioning
- ④ **Gripper jaw**  
- individual gripper finger mounting
- ⑤ **Wedge hook mechanism**  
- synchronized the movement of the gripper jaws  
- high force transfer
- ⑥ **Integrated gripping force safety device**  
- spring integrated into cylinder as energy storage
- ⑦ **Position sensing**  
- permanent magnet for direct monitoring of piston movement
- ⑧ **Integrated, adjustable switch cam**  
- for direct position sensing of the gripper jaw
- ⑨ **Mounting block**  
- mounting for inductive proximity switch (10)

## SERIES CHARACTERISTICS



Number of installation sizes	9
Stroke per jaw	3 mm - 30 mm
Gripping force	200 N - 34700 N
Weight	0,13 kg - 24 kg
AP class	3



10 million maintenance-free cycles (max.)



Spring closing C



Spring opening O



High-strength S



Inductive sensor



IP40



Magnetic field sensor



Purged air