

3-JAW CONCENTRIC GRIPPERS

INSTALLATION SIZE GD1

1

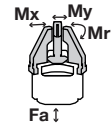
Installation size GD1 / 3-Jaw Concentric Grippers / pneumatic / Grippers

▶ PRODUCT SPECIFICATIONS



▶ Forces and moments

Displays static forces and moments that can also have an effect, besides the gripping force.



Mr [Nm]	0.1
Mx [Nm]	0.1
My [Nm]	0.1
Fa [N]	10

▶ RECOMMENDED ACCESSORIES



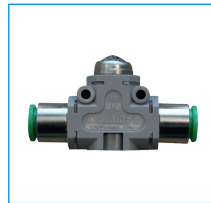
Rotation limiter

DB1-B



Straight Fittings - Quick Connect Style

GVM5



Quick Exhaust Valve

DEV04



Pressure Safety Valve

DSV1-8

▶ RECOMMENDED ACCESSORY ROTATION LIMITER



Inductive proximity switch - Cable 5 m

NJ3-E2-02



Plug-in connector customizable Straight - Connector M8

S8-G-3

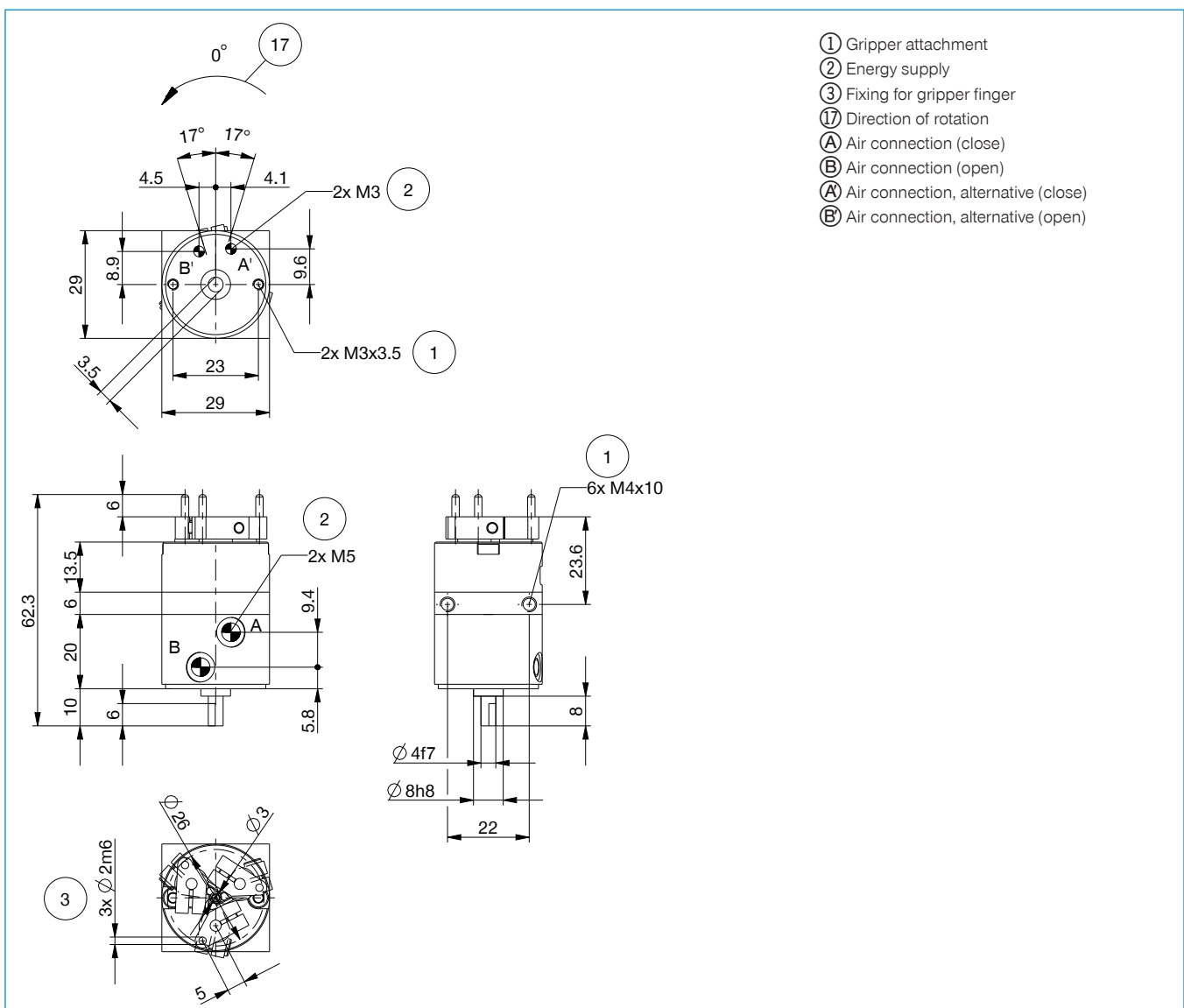


Plug-in connector customizable Straight - Connector M12

S12-G-3

Order no.	GD1-B
Stroke per jaw [°]	130
Grip diameter in closing min. [mm]	3
Grip diameter in closing max. [mm]	22
Grip diameter in opening min. [mm]	7
Grip diameter in opening max. [mm]	26
Gripping moment in closing [Nm]	0.12
Gripping moment in opening [Nm]	0.12
Closing time [s]	0.02
Opening time [s]	0.02
Repetition accuracy +/- [mm]	0.05
Operating pressure min. [bar]	3
Operating pressure max. [bar]	8
Operating temperature min. [°C]	5
Operating temperature max. [°C]	+60
Air volume per cycle [cm ³]	2.8
Weight [kg]	0.08

*All data measured at 6 bar

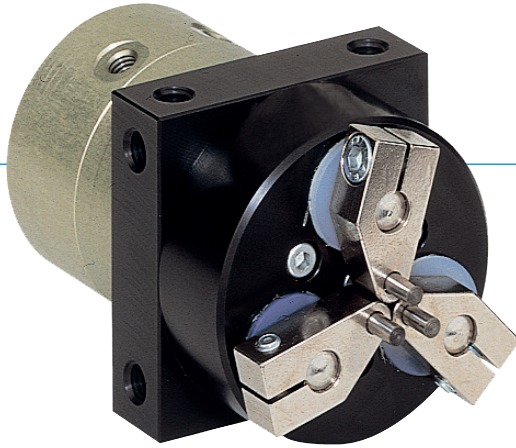


3-JAW CONCENTRIC GRIPPERS

SERIES GD

1

▶ PRODUCT ADVANTAGES



“The flexible”

▶ Largest stroke in small installation space

You can cover numerous application variants with just one gripper type

▶ Gripper jaws included in the delivery

Reduces your design effort, manufacturing costs and setup time

▶ Smooth stroke configuration

Using the optionally available stroke limit, you can customise the stroke to your application, even stroke sensing is possible

▶ THE BEST PRODUCT FOR YOUR APPLICATION



▶ Our products welcome the challenge!

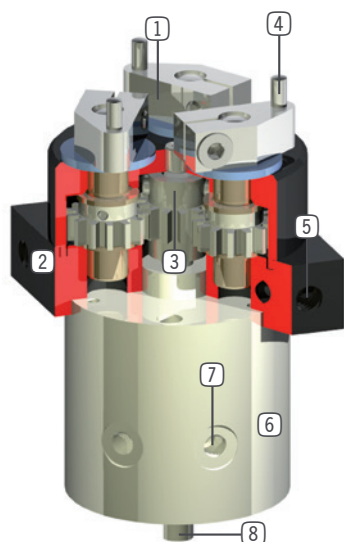
Extreme conditions, all over the world—our tried and tested components and systems give you endless possibilities.

Find the best product for your specific use:

www.zimmer-group.de



► BENEFITS IN DETAIL



- ① **Gripping movement on rotation**
 - for various workpiece diameters
- ② **Robust, lightweight housing**
 - Hard-coated aluminum alloy
- ③ **Planetary transmission**
 - synchronized the movement of the gripper jaws
- ④ **Standard pins serve as gripper jaw**
- ⑤ **Mounting and positioning**
 - mounting possible from several sides for versatile positioning
- ⑥ **Drive**
 - double-acting pneumatic cylinder
- ⑦ **Energy supply**
 - possible radial and axial
- ⑧ **Shaft projection**
 - for accessory assembly e.g. sensors

► SERIES CHARACTERISTICS



Number of installation sizes	3
Stroke per jaw	120° - 180°
Gripping force	24 N - 530 N
Weight	0,08 kg - 2 kg
AP class	2



10 million maintenance-free cycles (max.)



Inductive sensor



IP40