

2-JAW PARALLEL GRIPPERS

INSTALLATION SIZE MGP801

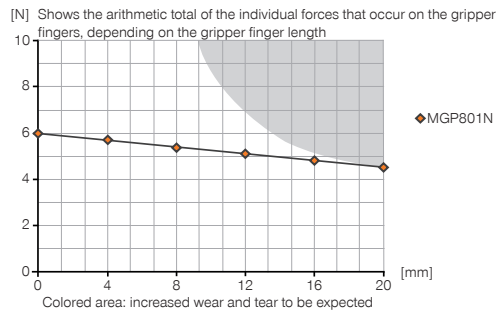
1

Installation size MGP801 / 2-Jaw Parallel Grippers / pneumatic / Grippers

▶ PRODUCT SPECIFICATIONS

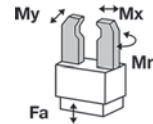


▶ Gripping force diagram



▶ Forces and moments

Displays static forces and moments that can also have an effect, besides the gripping force.



| | |
|---------|----|
| Mr [Nm] | 1 |
| Mx [Nm] | 2 |
| My [Nm] | 1 |
| Fa [N] | 54 |

▶ INCLUDED IN DELIVERY



Centering Disc

DST80100

▶ RECOMMENDED ACCESSORIES



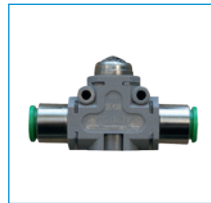
Straight Fittings - Barb Style Connection

GVM3



Angled Fittings - Barb Style Connection

WVM3

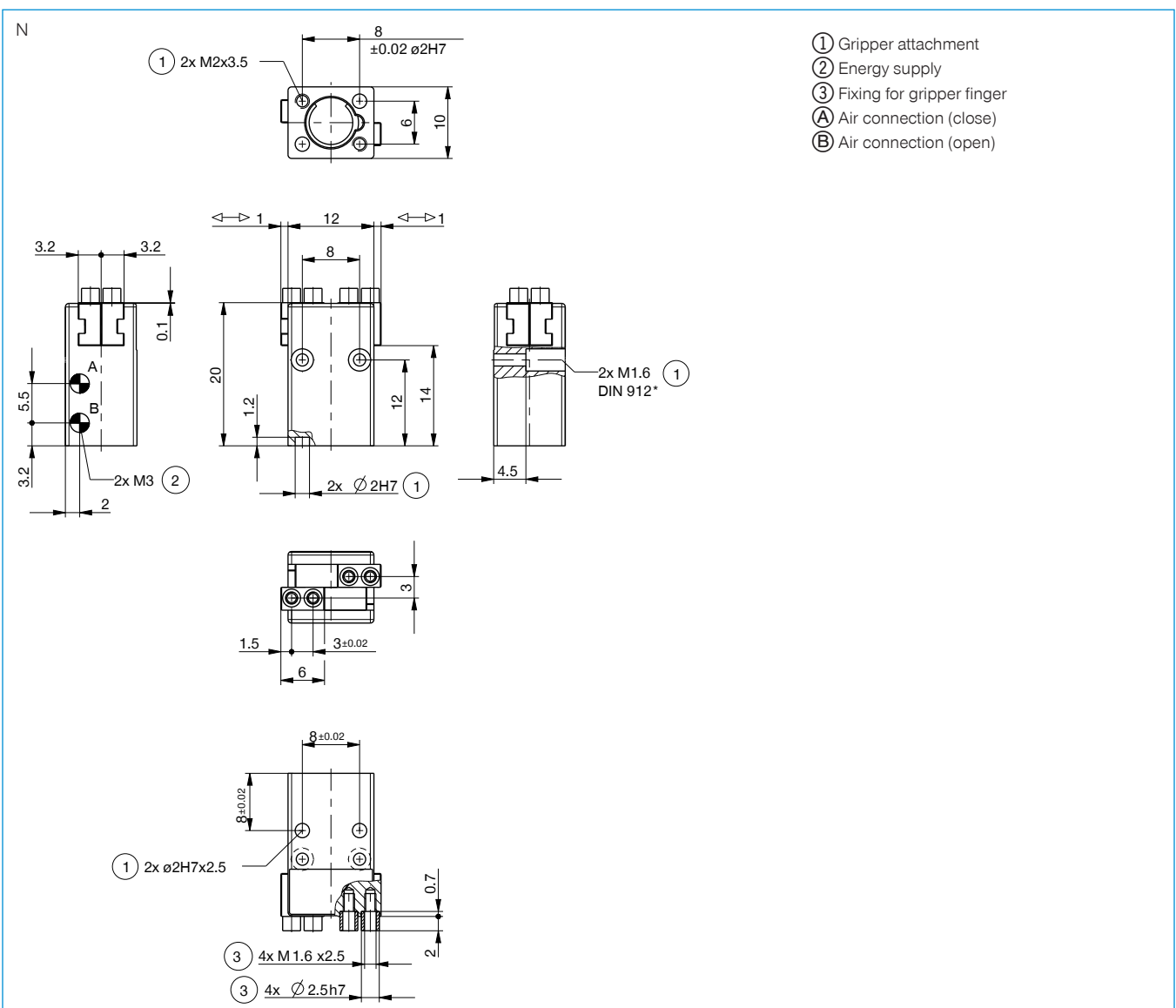


Quick Exhaust Valve

DEV04

| Order no. | Technical Data* |
|---|-----------------|
| Stroke per jaw [mm] | 1 |
| Gripping force in closing [N] | 6 |
| Gripping force in opening [N] | 8 |
| Gripping force secured by spring min. [N] | |
| Closing time [s] | 0.01 |
| Opening time [s] | 0.01 |
| Repetition accuracy +/- [mm] | 0.025 |
| Operating pressure min. [bar] | 3 |
| Operating pressure max. [bar] | 8 |
| Operating temperature min. [°C] | 5 |
| Operating temperature max. [°C] | +80 |
| Air volume per cycle [cm³] | 0.09 |
| Weight [kg] | 0.008 |

*All data measured at 6 bar



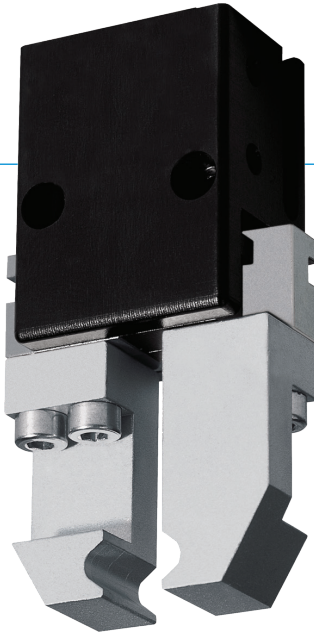
2-JAW PARALLEL GRIPPERS

SERIES MGP800

1

Series MGP800 / 2-Jaw Parallel Grippers / pneumatic / Grippers

▶ PRODUCT ADVANTAGES



“The powerful”

- ▶ **Over 40% more powerful than the benchmark**
Optimisation of weight and force reduces your application costs since all components can have a smaller scale
- ▶ **Gripper jaws up to 50% longer than the benchmark**
The highest force and torque measurement enables flexible use for maximum dynamics
- ▶ **Failure-free continuous operation**
Our uncompromising „Made in Germany“ quality guarantees up to 10 million maintenance-free cycles

▶ THE BEST PRODUCT FOR YOUR APPLICATION



- ▶ **Our products welcome the challenge!**
Extreme conditions, all over the world—our tried and tested components and systems give you endless possibilities.
Find the best product for your specific use:
www.zimmer-group.de

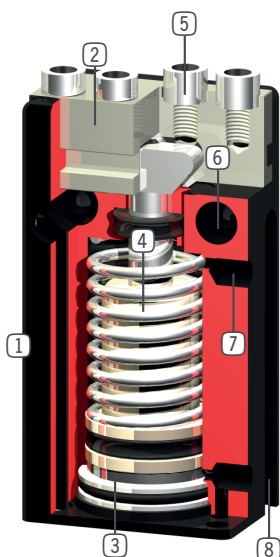
HOW TO ORDER CORRECTLY

- ▶ The product order numbers are arranged according to this diagram:

| | | | | |
|---|---------|--------------------------|--|--|
| Order no. | MGP803N | <input type="checkbox"/> | | |
| For external gripping, self-locking, spring closing | | C | | |
| | | | | |
| | | | | |
| | | | | |



BENEFITS IN DETAIL



- ① **Robust, lightweight housing**
- Hard-coated aluminum alloy
- ② **Gripper jaw**
- individual gripper finger mounting
- ③ **Position sensing**
- permanent magnet for direct monitoring of piston movement
- ④ **Integrated gripping force safety device**
- spring integrated into cylinder as energy storage (from size 803 upwards)
- ⑤ **Removable centering sleeves**
- quick and economical positioning of the gripper fingers
- ⑥ **Mounting and positioning**
- mounting possible from several sides for versatile positioning
- ⑦ **Energy supply**
- possible from several sides
- ⑧ **Sensing slot**
- mounting and positioning of magnetic field sensors

SERIES CHARACTERISTICS



| | |
|------------------------------|--------------------|
| Number of installation sizes | 8 |
| Stroke per jaw | 1 mm - 12 mm |
| Gripping force | 6 N - 400 N |
| Weight | 0,008 kg - 0,46 kg |
| AP class | 2 |



10 million maintenance-free cycles (max.)



Spring closing C



IP40



Magnetic field sensor