

O-RING ASSEMBLY GRIPPER, OUTER INSTALLATION SIZE GS65

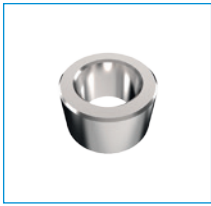
1

Installation size GS65 / O-ring assembly gripper, outer / pneumatic / Grippers

▶ PRODUCT SPECIFICATIONS



▶ INCLUDED IN DELIVERY



Centering Disc

DST06510

▶ RECOMMENDED ACCESSORIES



Ejector Jaws Aluminium

UB65-3



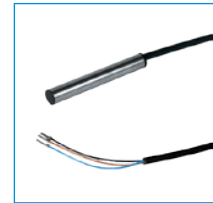
Expanding Jaws Steel

UB65-4



Mounting block

KB6.5-02



Inductive proximity switch
- Cable 5 m

NJ6.5-E2-01



Inductive proximity switch
- Connector M8

NJ6.5-E2S



Magnetic field sensor
Angled Cable 5 m

MFS103KHC



Magnetic field sensor Angled
Cable 0,3 m - Connector M8

MFS103SKHC



Plug-in connector Straight Ca-
ble 5m - Socket M8 (female)

KAG500



Plug-in connector Angled Ca-
ble 5m - Socket M8 (female)

KAW500



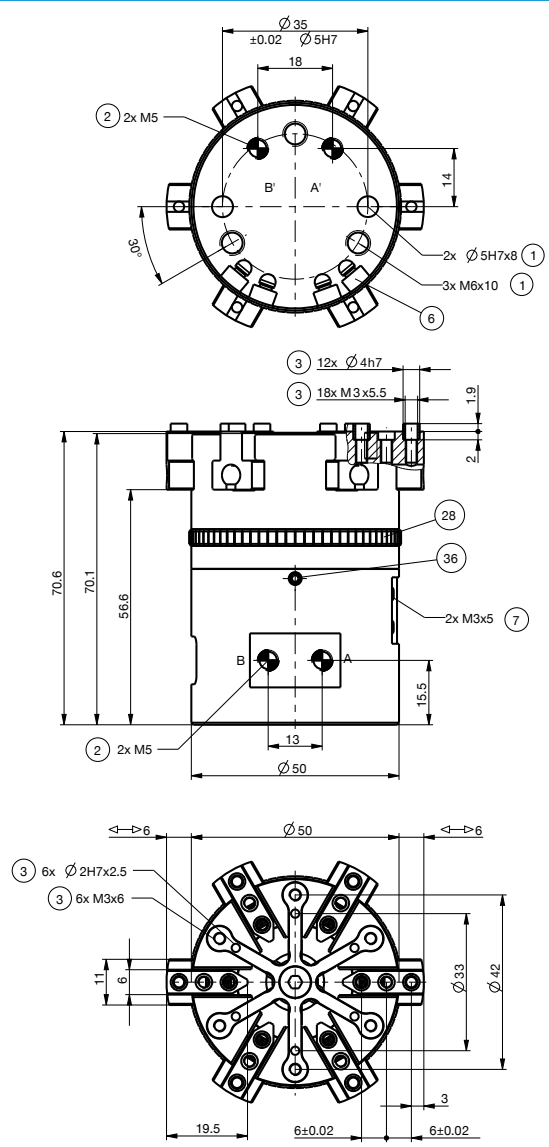
Straight Fittings - Quick
Connect Style

GVM5

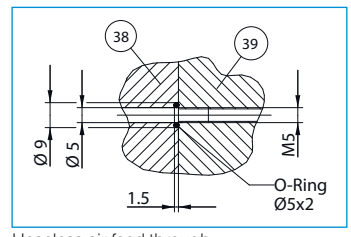
Order no.	GS65-B
Opening stroke adjustable per jaw min. [mm]	3
Opening stroke adjustable per jaw max. [mm]	6
Stripping stroke [mm]	5
Opening force [N]	300
Recommended O-ring diameter min. [mm]	4
Recommended O-ring diameter max. [mm]	60
Number of gripping jaws [Quantity]	6
Closing time [s]	0.05
Opening time [s]	0.05
Repetition accuracy +/- [mm]	0.05
Operating pressure min. [bar]	4
Operating pressure max. [bar]	8
Operating temperature min. [°C]	5
Operating temperature max. [°C]	+80
Weight [kg]	0.5

*All data measured at 6 bar

► Technical Data*



- ① Gripper attachment
- ② Energy supply
- ③ Fixing for gripper finger
- ⑥ Integrated slot for magnetic field sensor
- ⑦ Fixing for mounting block
- ⑳ Adjustment ring
- ㉔ Arrester for adjustment ring
- ㉘ Adapter
- ㉙ Gripper
- A Air connection (expanding stroke)
- B Air connection (ejector stroke)
- B' Air connection alternate (expanding stroke)
- A' Air connection alternate (ejector stroke)



Hoseless air feed-through

O-RING ASSEMBLY GRIPPER, OUTER SERIES GS

1

Series GS / O-ring assembly gripper, outer / pneumatic / Grippers

▶ PRODUCT ADVANTAGES



▶ Proven technology

We have more than 20 years of proven reliability, which ensures uninterrupted production for you

▶ Adjustable expanding stroke

Prevents the O-ring from overexpanding and ensures consistent production quality

▶ Query about magnetic field sensor technology

Detecting the end position allows you to have shorter cycle times and an integrated control system

▶ THE BEST PRODUCT FOR YOUR APPLICATION



▶ Our products welcome the challenge!

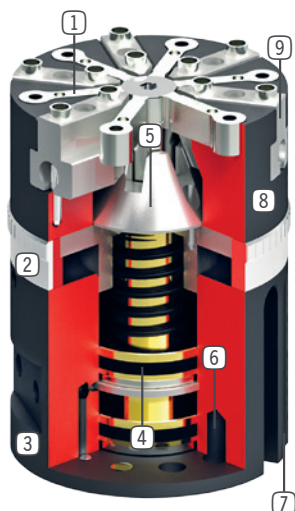
Extreme conditions, all over the world—our tried and tested components and systems give you endless possibilities.

Find the best product for your specific use:

www.zimmer-group.de



► BENEFITS IN DETAIL



- ① **Ejector jaw**
 - to shift off the O-ring
- ② **Stroke adjustment**
 - for adjustment of the spread stroke
- ③ **Energy supply**
 - possible from several sides
- ④ **Drive**
 - two single-acting pneumatic cylinders
- ⑤ **Force transfer**
 - direct via taper
- ⑥ **Mounting and positioning**
 - axial, on the gripper bottom
- ⑦ **Sensing slot**
 - mounting and positioning of magnetic field sensors
- ⑧ **Robust, lightweight housing**
 - Hard-coated aluminum alloy
- ⑨ **Gripper jaw**
 - individual gripper finger mounting

► FURTHER INFORMATION IS AVAILABLE ONLINE



► **Technical Information**

All information just a click away at: www.zimmer-group.com

Find data, illustrations, 3D models and operating instructions for your installation size using the order number for your desired product.

Quick, clear and always up-to-date.

