

# O-RING ASSEMBLY GRIPPER, OUTER

## INSTALLATION SIZE GS1015

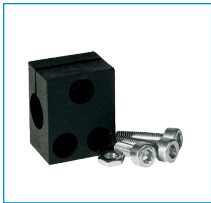
1

Installation size GS1015 / O-ring assembly gripper, outer / pneumatic / Grippers

### ▶ PRODUCT SPECIFICATIONS

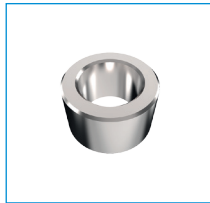


### ▶ INCLUDED IN DELIVERY



Mounting block

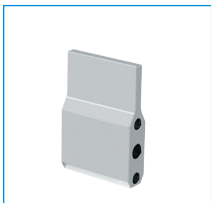
**KB8K**



Centering Disc

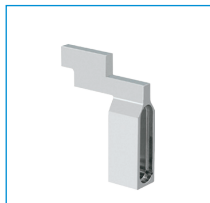
**DST60800**

### ▶ RECOMMENDED ACCESSORIES



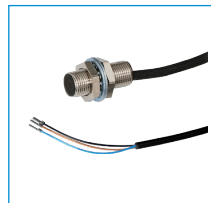
Ejector Jaws Aluminium

**UB1015-3**



Expanding Jaws Steel

**UB1015-4**



Inductive proximity switch  
- Cable 5 m

**NJ8-E2**



Inductive proximity switch  
- Connector M8

**NJ8-E2S**



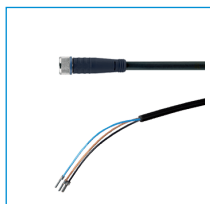
Magnetic field sensor  
Angled Cable 5 m

**MFS103KHC**



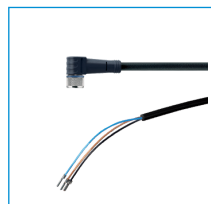
Magnetic field sensor Angled  
Cable 0,3 m - Connector M8

**MFS103SKHC**



Plug-in connector Straight Ca-  
ble 5m - Socket M8 (female)

**KAG500**



Plug-in connector Angled Ca-  
ble 5m - Socket M8 (female)

**KAW500**



Straight Fittings - Quick  
Connect Style

**GV1-8X8**

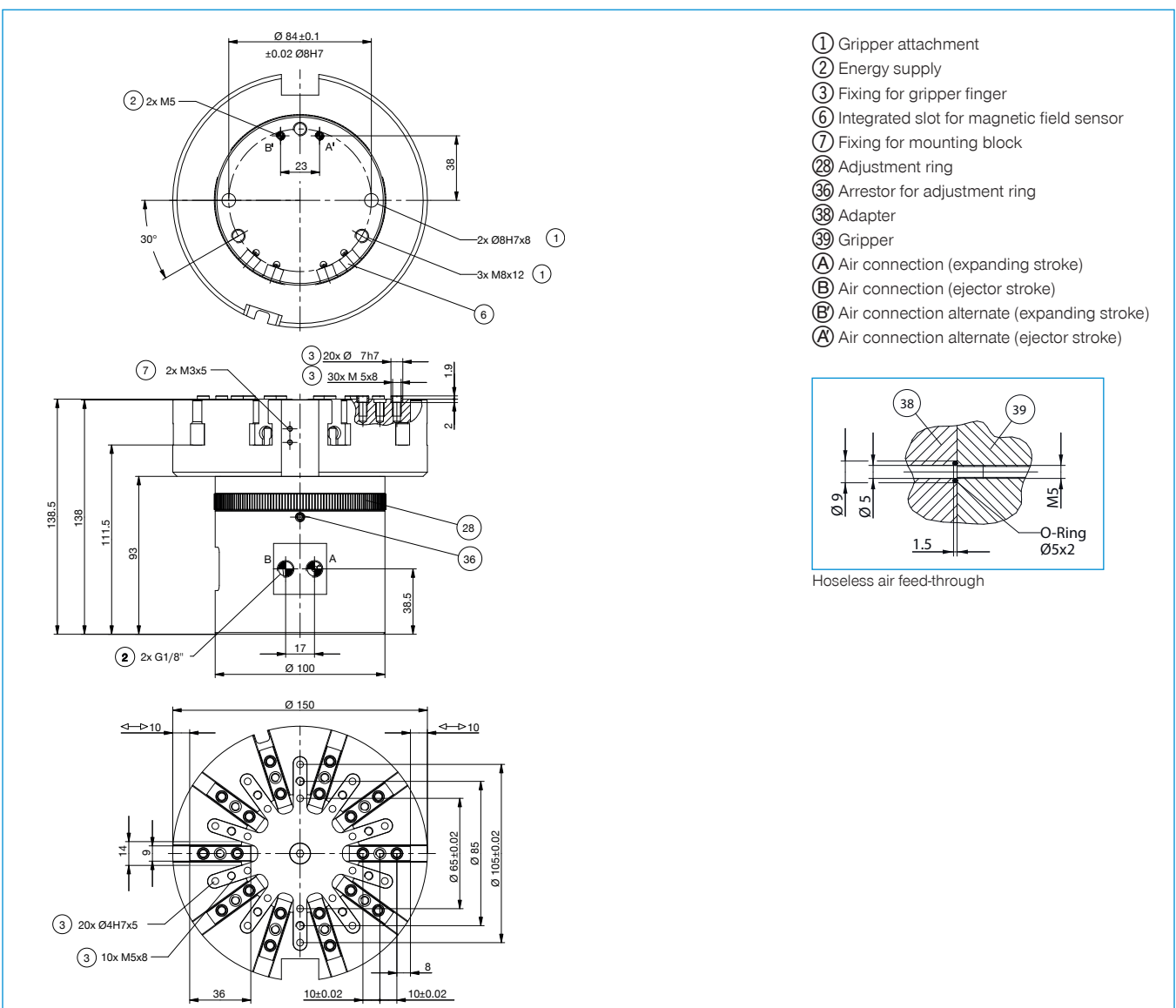


Plug-in connector customiz-  
able Straight - Connector M8

**S8-G-3**

► Technical Data*	
<b>Order no.</b>	<b>GS1015-B</b>
Opening stroke adjustable per jaw min. [mm]	1.6
Opening stroke adjustable per jaw max. [mm]	10
Stripping stroke [mm]	15
Opening force [N]	1450
Recommended O-ring diameter min. [mm]	40
Recommended O-ring diameter max. [mm]	150
Number of gripping jaws [Quantity]	10
Closing time [s]	0.05
Opening time [s]	0.05
Repetition accuracy +/- [mm]	0.05
Operating pressure min. [bar]	3
Operating pressure max. [bar]	8
Operating temperature min. [°C]	5
Operating temperature max. [°C]	+80
Weight [kg]	5.4

\*All data measured at 6 bar



# O-RING ASSEMBLY GRIPPER, OUTER SERIES GS

1

Series GS / O-ring assembly gripper, outer / pneumatic / Grippers

## ▶ PRODUCT ADVANTAGES



### ▶ Proven technology

We have more than 20 years of proven reliability, which ensures uninterrupted production for you

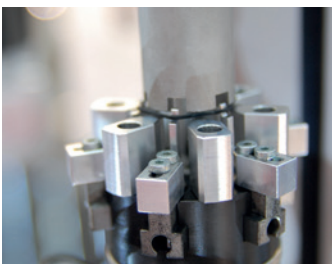
### ▶ Adjustable expanding stroke

Prevents the O-ring from overexpanding and ensures consistent production quality

### ▶ Query about magnetic field sensor technology

Detecting the end position allows you to have shorter cycle times and an integrated control system

## ▶ THE BEST PRODUCT FOR YOUR APPLICATION



### ▶ Our products welcome the challenge!

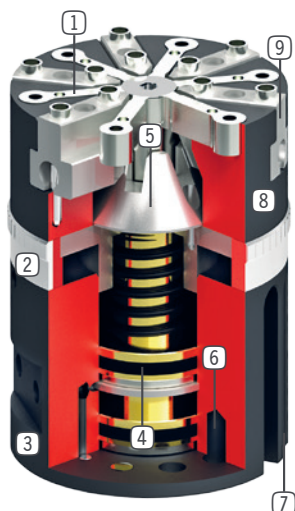
Extreme conditions, all over the world—our tried and tested components and systems give you endless possibilities.

Find the best product for your specific use:

[www.zimmer-group.de](http://www.zimmer-group.de)



## ► BENEFITS IN DETAIL



- ① **Ejector jaw**
  - to shift off the O-ring
- ② **Stroke adjustment**
  - for adjustment of the spread stroke
- ③ **Energy supply**
  - possible from several sides
- ④ **Drive**
  - two single-acting pneumatic cylinders
- ⑤ **Force transfer**
  - direct via taper
- ⑥ **Mounting and positioning**
  - axial, on the gripper bottom
- ⑦ **Sensing slot**
  - mounting and positioning of magnetic field sensors
- ⑧ **Robust, lightweight housing**
  - Hard-coated aluminum alloy
- ⑨ **Gripper jaw**
  - individual gripper finger mounting

## ► FURTHER INFORMATION IS AVAILABLE ONLINE



### ► **Technical Information**

All information just a click away at: [www.zimmer-group.com](http://www.zimmer-group.com)  
Find data, illustrations, 3D models and operating instructions for your installation size using the order number for your desired product.  
Quick, clear and always up-to-date.

