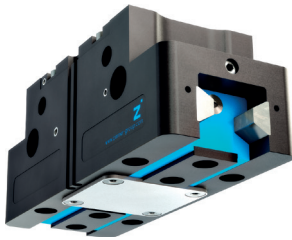


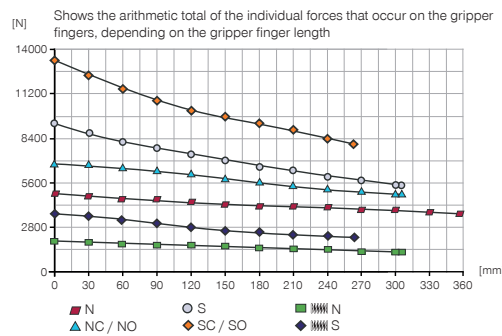
# 2-JAW PARALLEL GRIPPERS

## INSTALLATION SIZE GPP5030

### 1 PRODUCT SPECIFICATIONS

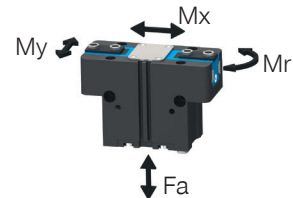


#### Gripping force diagram



#### Forces and moments

Displays static forces and moments that can also have an effect, besides the gripping force.



Mr [Nm]	210
Mx [Nm]	290
My [Nm]	310
Fa [N]	9500

### TECHNICAL DATA

Order no.	Technical data					
	GPP5030N-00-A	GPP5030NC-00-A	GPP5030NO-00-A	GPP5030S-00-A	GPP5030SC-00-A	GPP5030SO-00-A
Stroke per jaw [mm]	30	30	30	17	17	17
Gripping force in closing [N]	5000	6850		9600	13160	
Gripping force in opening [N]	5210		7060	9990		13550
Gripping force secured by spring min. [N]		1850	1850		3560	3560
Closing time [s]	0.4	0.35	0.65	0.4	0.35	0.65
Opening time [s]	0.4	0.65	0.35	0.4	0.65	0.35
Permissible weight per jaw max [kg]	9.5	9.5	9.5	9.5	9.5	9.5
Length of the gripper fingers max. [mm]	355	305	305	305	260	260
Repetition accuracy +/- [mm]	0.04	0.04	0.04	0.04	0.04	0.04
Operating pressure min. [bar]	3	4	4	3	4	4
Operating pressure max. [bar]	8	7	7	8	7	7
Nominal operating pressure [bar]	6	6	6	6	6	6
Operating temperature [°C]	-10 ... +90	-10 ... +90	-10 ... +90	-10 ... +90	-10 ... +90	-10 ... +90
Air volume per cycle [cm³]	745	1430	1430	745	1430	1430
Protection to IEC 60529	IP64	IP64	IP64	IP64	IP64	IP64
Weight [kg]	9.2	12	12	9.2	12	12

Order no.	Technical Data - High Temperature Version					
	GPP5030N-20-A	GPP5030NC-20-A	GPP5030NO-20-A	GPP5030S-20-A	GPP5030SC-20-A	GPP5030SO-20-A
Operating temperature [°C]	-10 ... +130	-10 ... +130	-10 ... +130	-10 ... +130	-10 ... +130	-10 ... +130

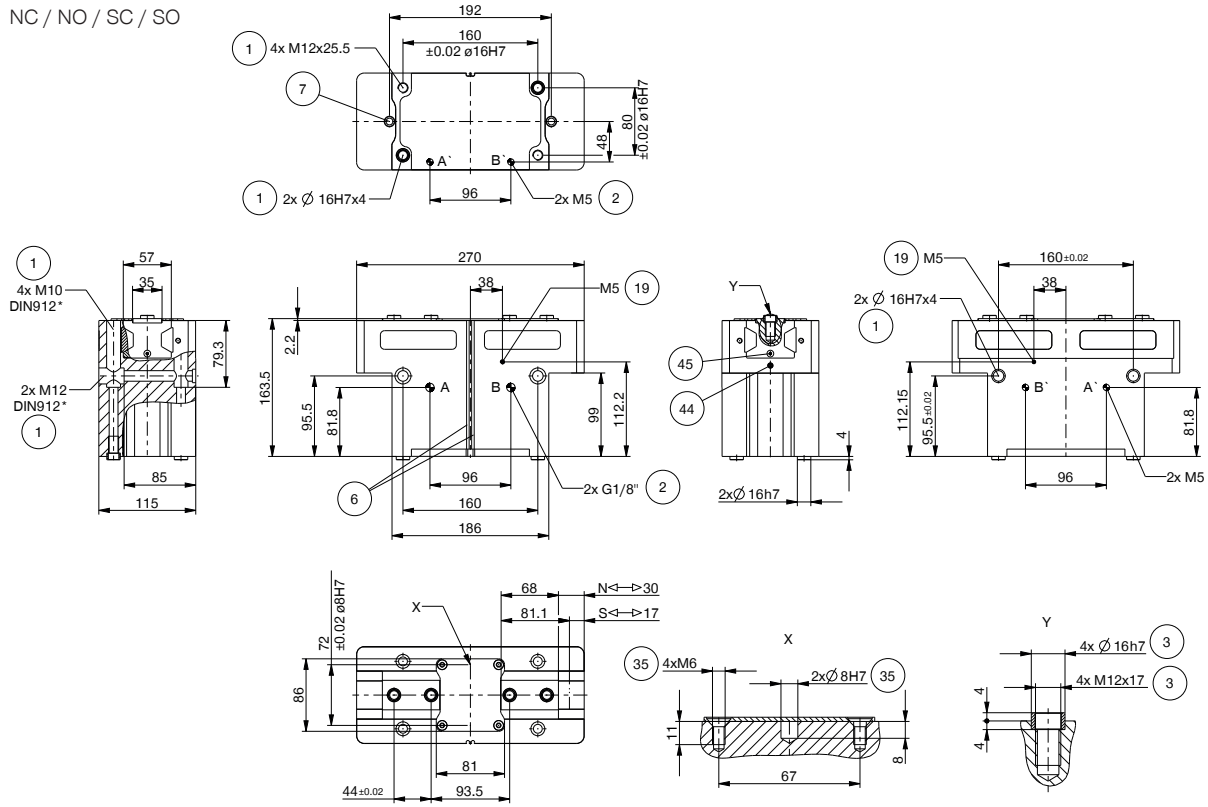
Order no.	Technical Data - Protector Version					
	GPP5030N-21-A	GPP5030NC-21-A	GPP5030NO-21-A	GPP5030S-21-A	GPP5030SC-21-A	GPP5030SO-21-A
Protection to IEC 60529	IP67 *	IP67 *	IP67 *	IP67 *	IP67 *	IP67 *
Weight [kg]	10.9	13.7	13.7	10.9	13.7	13.7

Order no.	Technical Data - High Temperature Protector Version					
	GPP5030N-24-A	GPP5030NC-24-A	GPP5030NO-24-A	GPP5030S-24-A	GPP5030SC-24-A	GPP5030SO-24-A
Operating temperature [°C]	-10 ... +130	-10 ... +130	-10 ... +130	-10 ... +130	-10 ... +130	-10 ... +130
Protection to IEC 60529	IP67 *	IP67 *	IP67 *	IP67 *	IP67 *	IP67 *
Weight [kg]	10.9	13.7	13.7	10.9	13.7	13.7

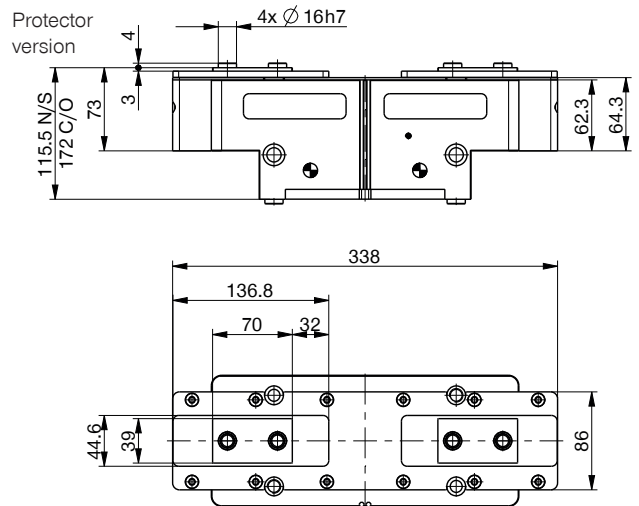
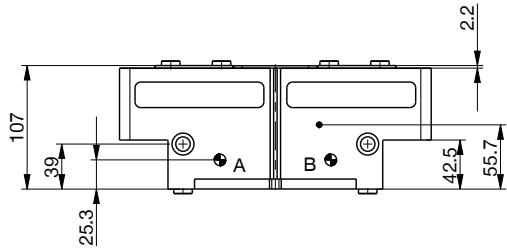
\*with purged air (max. 0,5 bar)

# TECHNICAL DRAWINGS

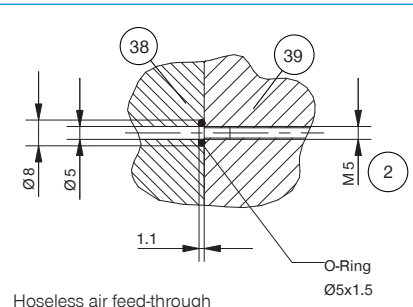
NC / NO / SC / SO



N / S



- ① Gripper attachment
- ② Energy supply
- ③ Fixing for gripper finger
- ⑥ Integrated slot for magnetic field sensor
- ⑦ Mounting block
- ⑱ Air purge connection option
- ⑳ Attachment option for customer-specific fittings
- ㉘ Adapter
- ㉙ Gripper
- ㉚ Clamp for sensor
- ㉛ Switch cam adjustment
- Ⓐ Air connection (close)
- Ⓑ Air connection (open)
- Ⓐ Air connection, alternative (close)
- Ⓑ Air connection, alternative (open)

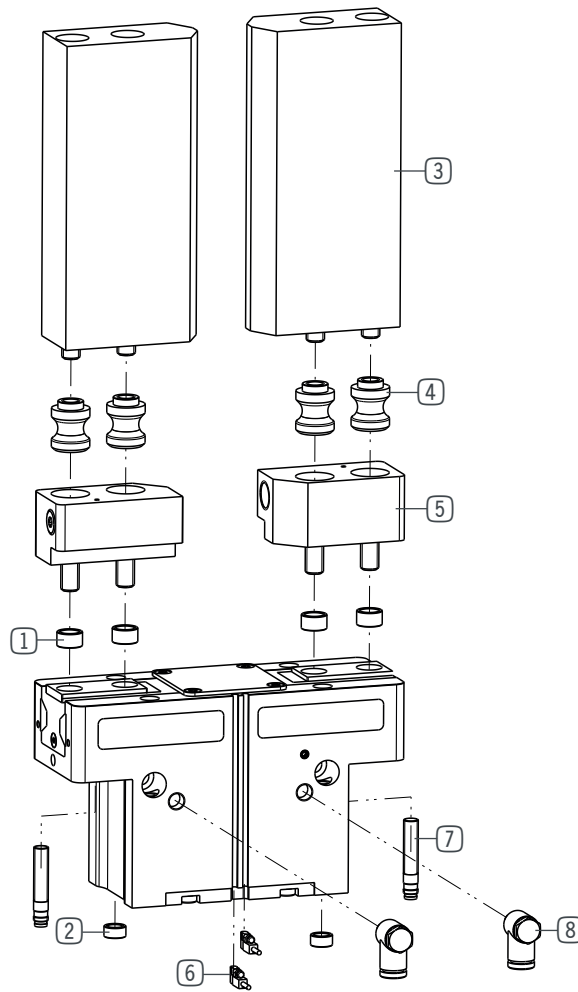


# 2-JAW PARALLEL GRIPPERS

## INSTALLATION SIZE GPP5030

1

Installation size GPP5030 / 2-Jaw Parallel Grippers / pneumatic / Grippers



### ▶ INCLUDED IN DELIVERY



Centering Disc

030529

**▶ RECOMMENDED ACCESSORIES**



Universal jaw aluminium

**UB5030AL**



Universal jaw steel

**UB5030ST**



Aluminum adjustment jaw

**EB5030AL**



Steel adjustment jaw

**EB5030ST**



Changeable jaw, loose-part-set

**WB5030L**



Changeable jaw, fix-part

**WB5030F**



Inductive proximity switch - Connector M8

**NJ8-E2S**



Magnetic field sensor Angled Cable 0,3 m - Connector M8

**MFS103SKHC**



Magnetic field sensor Straight Cable 0,3 m - Connector M8

**MFS204SKHC**



2-Position-Sensor Cable 0,3 m - Connector M8

**MFSP2SKHC-02**



Plug-in connector Straight Cable 5m - Socket M8 (female)

**KAG500**



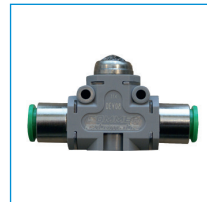
Plug-in connector customizable Straight - Connector M8

**S8-G-3**



Angled Fittings - Quick Connect Style

**WV1-8X8**



Quick Exhaust Valve

**DEV08**



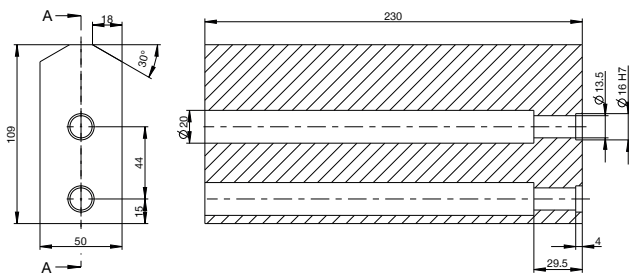
Pressure Safety Valve

**DSV1-8**

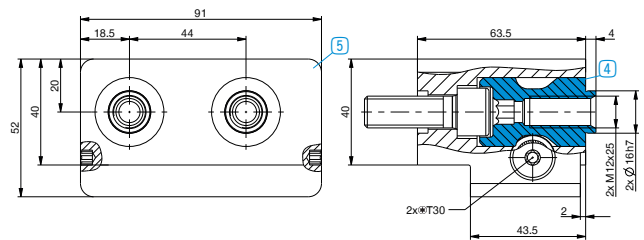
**▶ TECHNICAL DRAWINGS ACCESSORIES**

One universal jaw is required for each gripper jaw **3**

A-A



For each gripper jaw, one interchangeable jaw loose part set **4** and one interchangeable jaw fixed part **5** are needed

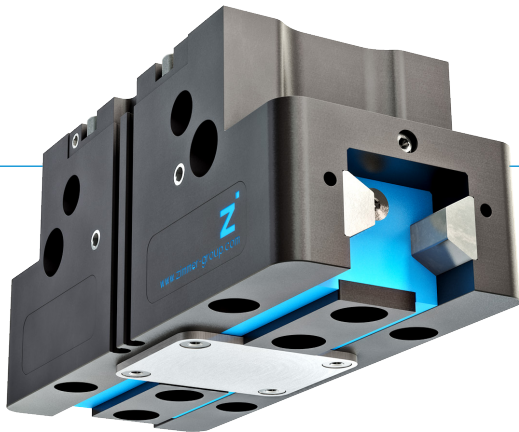


# 2-JAW PARALLEL GRIPPERS

## SERIES GPP5000

1

### ▶ PRODUCT ADVANTAGES



#### “The Universal One”

- ▶ Up to 30% more gripping force than the benchmark
- ▶ 10% more static forces and moments than the benchmark
- ▶ Gripper fingers up to 10% longer than the benchmark
- ▶ Gripper fingers weight up to 15% higher than the benchmark
- ▶ Sealed guide IP64 / Protector version IP67 (with purged air)
- ▶ Protected against corrosion
- ▶ Up to 30 million cycles without maintenance

### ▶ THE BEST PRODUCT FOR YOUR APPLICATION



#### ▶ Our products love the challenge!

Extreme conditions, all over the world—our tried and tested components and systems give you limitless possibilities:

Find the best product for your specific use:

[www.zimmer-group.com](http://www.zimmer-group.com)

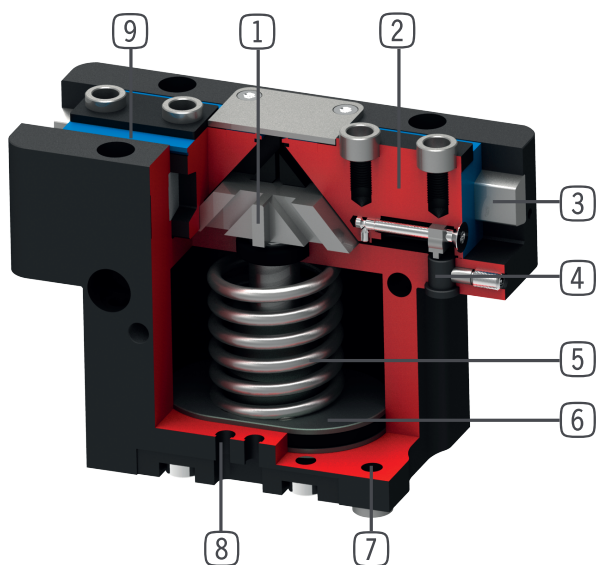
#### HOW TO ORDER CORRECTLY

- ▶ The product order numbers are arranged according to this diagram:

Order no.	GPP5010	<input type="checkbox"/>	<input type="checkbox"/>	- <input type="checkbox"/>	-A
Basis version	N				
High force	S				
For external gripping, self-locking, spring closing			C		
For internal gripping, self-locking, spring opening			O		
temperature-resistant version to 130 °C				20	
Protector version IP67 for use in adverse environments (with purged air)				21	
temperature-resistant protector version IP67 for use in adverse environments (with purged air) to 130 °C				24	

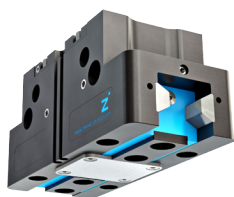


## ► BENEFITS IN DETAIL



- ① **Wedge hook mechanism**
  - Supports to absorb high forces and moments
  - Synchronized gripper jaw movement
- ② **Gripper jaw**
  - Gripper fingers mounted using removable centring sleeves
  - Lubricated for life via incorporated lubrication slots
- ③ **Steel Linear Guide**
  - Steel in steel guide
  - Enables use of extremely long gripper fingers
- ④ **Mounting block**
  - mounting for inductive proximity switch
- ⑤ **Integrated gripping force safety device**
  - Spring built into cylinder chamber as an energy store
- ⑥ **Drive**
  - Double-acting pneumatic rotor cylinder
- ⑦ **Mounting and positioning**
  - Alternatively, on several sides for customized mounting
  - Pneumatic and electrical versions identical apart from height
- ⑧ **Sensing slot**
  - mounting and positioning of magnetic field sensors
- ⑨ **Dual lip seal**
  - IP64 and up to IP67 (with purged air) for Protector version
  - Prevents grease from being squeezed out, increasing service life

## ► SERIES CHARACTERISTICS



Number of installation sizes	11
Stroke per jaw	2,5 mm - 45 mm
Gripping force	140 N - 26950 N
Weight	0,08 kg - 41,5 kg
AP class	5



30 million maintenance-free cycles (max.)



High-strength S



IP67



Temperature-resistant



Spring closing C



Inductive sensor



Corrosion resistance



Purged air



Spring opening O



IP64



Magnetic field sensor