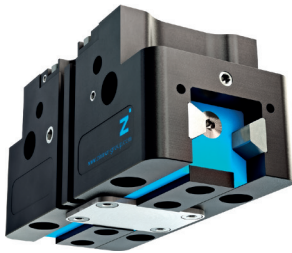


# 2-JAW PARALLEL GRIPPERS

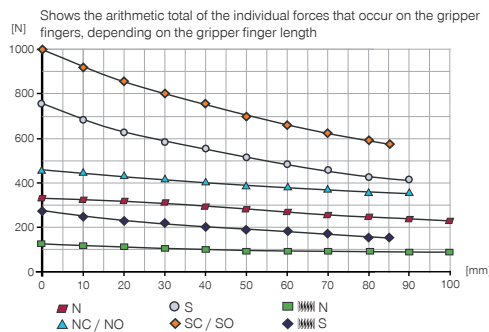
## INSTALLATION SIZE GPP5006

1

### PRODUCT SPECIFICATIONS

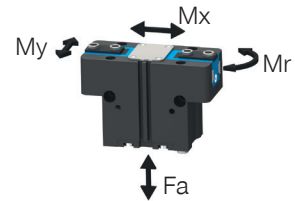


#### Gripping force diagram



#### Forces and moments

Displays static forces and moments that can also have an effect, besides the gripping force.



Mr [Nm]	43
Mx [Nm]	70
My [Nm]	46
Fa [N]	1250

### TECHNICAL DATA

Order no.	Technical data					
	GPP5006N-00-A	GPP5006NC-00-A	GPP5006NO-00-A	GPP5006S-00-A	GPP5006SC-00-A	GPP5006SO-00-A
Stroke per jaw [mm]	6	6	6	3	3	3
Gripping force in closing [N]	330	455		740	1020	
Gripping force in opening [N]	360		485	800		1080
Gripping force secured by spring min. [N]		125	125		280	280
Closing time [s]	0.025	0.015	0.035	0.025	0.015	0.035
Opening time [s]	0.025	0.035	0.015	0.025	0.035	0.015
Permissible weight per jaw max [kg]	0.4	0.4	0.4	0.4	0.4	0.4
Length of the gripper fingers max. [mm]	100	90	90	90	85	85
Repetition accuracy +/- [mm]	0.01	0.01	0.01	0.01	0.01	0.01
Operating pressure min. [bar]	3	4	4	3	4	4
Operating pressure max. [bar]	8	7	7	8	7	7
Nominal operating pressure [bar]	6	6	6	6	6	6
Operating temperature [°C]	-10 ... +90	-10 ... +90	-10 ... +90	-10 ... +90	-10 ... +90	-10 ... +90
Air volume per cycle [cm³]	11	24	24	11	24	24
Protection to IEC 60529	IP64	IP64	IP64	IP64	IP64	IP64
Weight [kg]	0.28	0.35	0.35	0.28	0.35	0.35

Order no.	Technical Data - High Temperature Version					
	GPP5006N-20-A	GPP5006NC-20-A	GPP5006NO-20-A	GPP5006S-20-A	GPP5006SC-20-A	GPP5006SO-20-A
Operating temperature [°C]	-10 ... +130	-10 ... +130	-10 ... +130	-10 ... +130	-10 ... +130	-10 ... +130

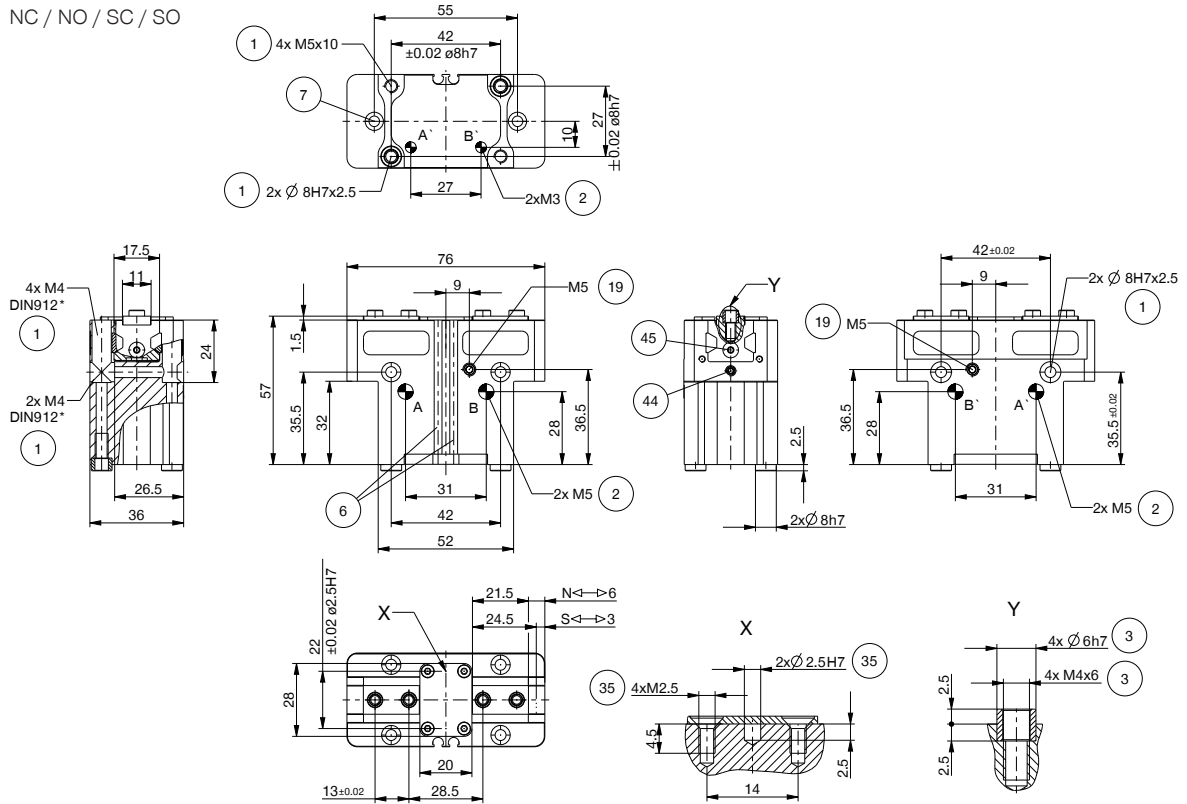
Order no.	Technical Data - Protector Version					
	GPP5006N-21-A	GPP5006NC-21-A	GPP5006NO-21-A	GPP5006S-21-A	GPP5006SC-21-A	GPP5006SO-21-A
Protection to IEC 60529	IP67 *	IP67 *	IP67 *	IP67 *	IP67 *	IP67 *
Weight [kg]	0.37	0.44	0.44	0.37	0.44	0.44

Order no.	Technical Data - High Temperature Protector Version					
	GPP5006N-24-A	GPP5006NC-24-A	GPP5006NO-24-A	GPP5006S-24-A	GPP5006SC-24-A	GPP5006SO-24-A
Operating temperature [°C]	-10 ... +130	-10 ... +130	-10 ... +130	-10 ... +130	-10 ... +130	-10 ... +130
Protection to IEC 60529	IP67 *	IP67 *	IP67 *	IP67 *	IP67 *	IP67 *
Weight [kg]	0.37	0.44	0.44	0.37	0.44	0.44

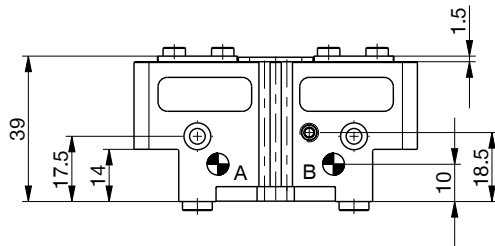
\*with purged air (max. 0,5 bar)

## TECHNICAL DRAWINGS

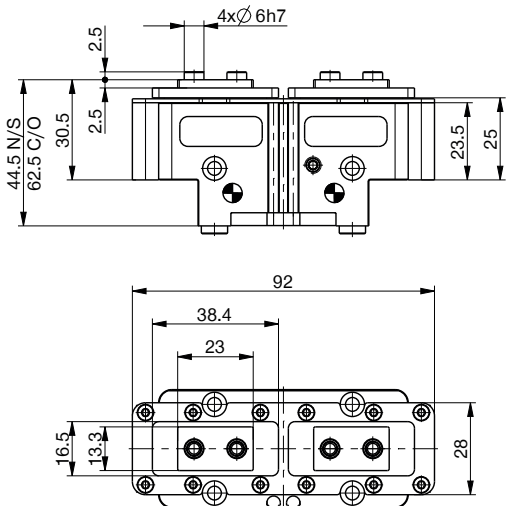
NC / NO / SC / SO



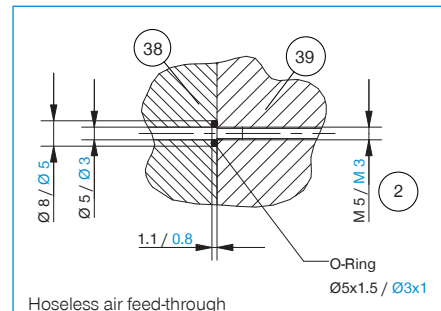
N / S



Protector version



- |  |  |
|--|--|
| ① Gripper attachment                               | ③⑨ Gripper                               |
| ② Energy supply                                    | ④④ Clamp for sensor                      |
| ③ Fixing for gripper finger                        | ④⑤ Switch cam adjustment                 |
| ⑥ Integrated slot for magnetic field sensor        | ④ A Air connection (close)               |
| ⑦ Mounting block                                   | ④ B Air connection (open)                |
| ⑱ Air purge connection option                      | ④ A' Air connection, alternative (close) |
| ⑳ Attachment option for customer-specific fittings | ④ B' Air connection, alternative (open)  |
| ㉘ Adapter  |  |

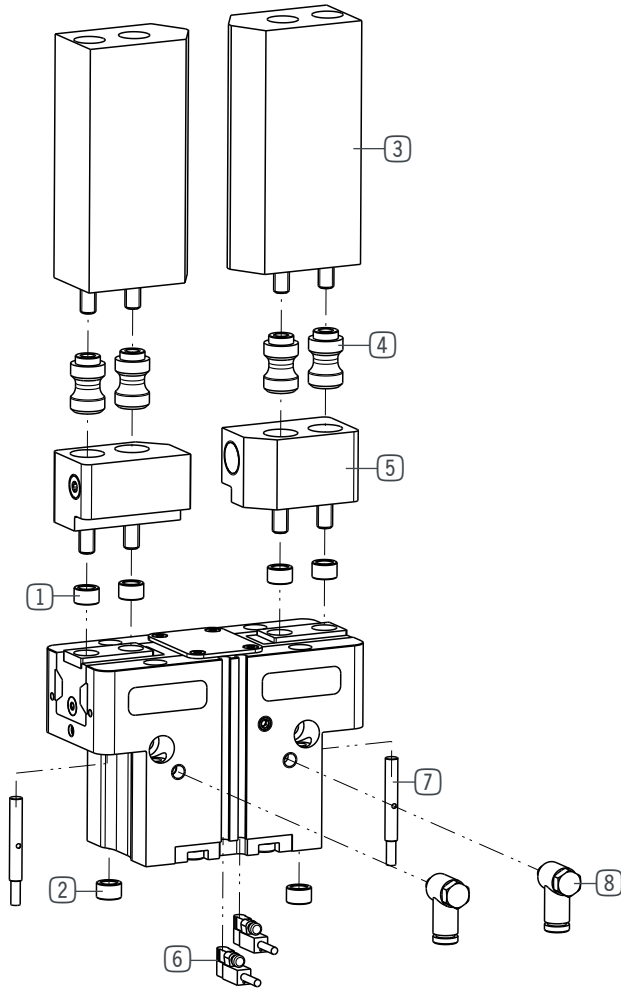


# 2-JAW PARALLEL GRIPPERS

## INSTALLATION SIZE GPP5006

1

Installation size GPP5006 / 2-Jaw Parallel Grippers / pneumatic / Grippers



### ▶ INCLUDED IN DELIVERY



Centering Disc

024230



Centering Disc

024231

**▶ RECOMMENDED ACCESSORIES**



Universal jaw aluminium

**UB5006AL**



Universal jaw steel

**UB5006ST**



Aluminum adjustment jaw

**EB5006AL**



Steel adjustment jaw

**EB5006ST**



Changeable jaw, loose-part-set

**WB5006L**



Changeable jaw, fix-part

**WB5006F**



Inductive Proximity Switch Cable 0,3 m - Connector M8

**NJ4-E2SK-01**



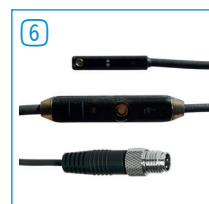
Magnetic field sensor Angled Cable 0,3 m - Connector M8

**MFS103SKHC**



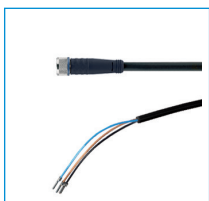
Magnetic field sensor Straight Cable 0,3 m - Connector M8

**MFS204SKHC**



2-Position-Sensor Cable 0,3 m - Connector M8

**MFSP2SKHC-02**



Plug-in connector Straight Cable 5m - Socket M8 (female)

**KAG500**



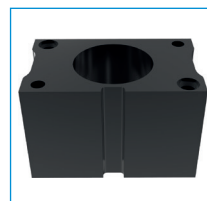
Angled Fittings - Quick Connect Style

**WVM5**



Pressure Safety Valve

**DSV1-8**



Compensation module N / S

**ZUB5006PNS**

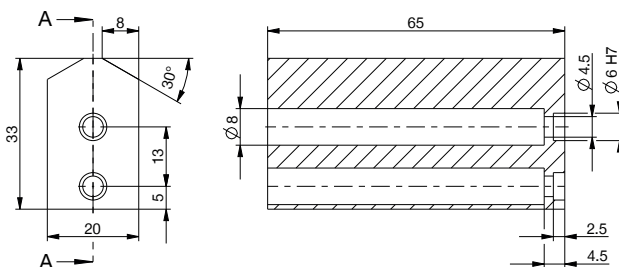


Compensation module NC / NO / SC / SO

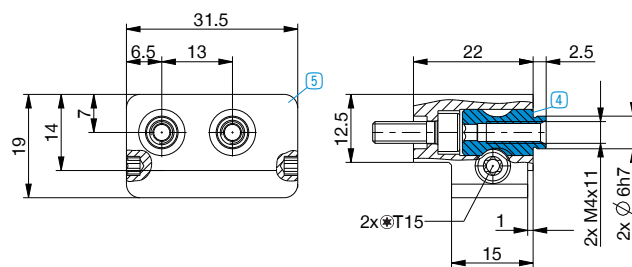
**ZUB5006PCO**

**▶ TECHNICAL DRAWINGS ACCESSORIES**

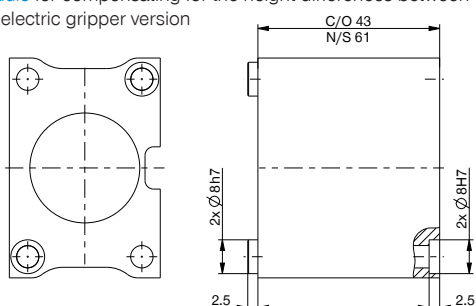
One universal jaw is required for each gripper jaw **(4)**



For each gripper jaw, one interchangeable jaw loose part set **(4)** and one interchangeable jaw fixed part **(5)** are needed



Compensation module for compensating for the height differences between the pneumatic and electric gripper version

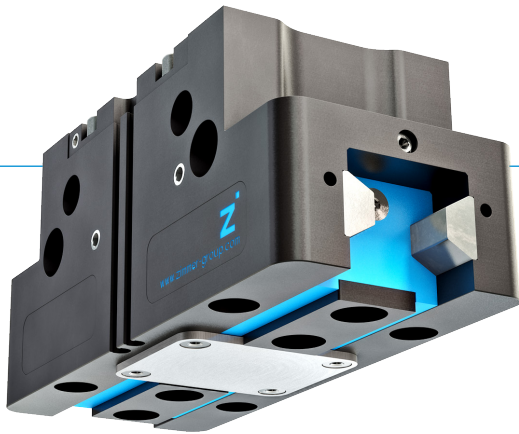


# 2-JAW PARALLEL GRIPPERS

## SERIES GPP5000

1

### ▶ PRODUCT ADVANTAGES



#### “The Universal One”

- ▶ Up to 30% more gripping force than the benchmark
- ▶ 10% more static forces and moments than the benchmark
- ▶ Gripper fingers up to 10% longer than the benchmark
- ▶ Gripper fingers weight up to 15% higher than the benchmark
- ▶ Sealed guide IP64 / Protector version IP67 (with purged air)
- ▶ Protected against corrosion
- ▶ Up to 30 million cycles without maintenance

### ▶ THE BEST PRODUCT FOR YOUR APPLICATION



#### ▶ Our products love the challenge!

Extreme conditions, all over the world—our tried and tested components and systems give you limitless possibilities:  
Find the best product for your specific use:  
[www.zimmer-group.com](http://www.zimmer-group.com)

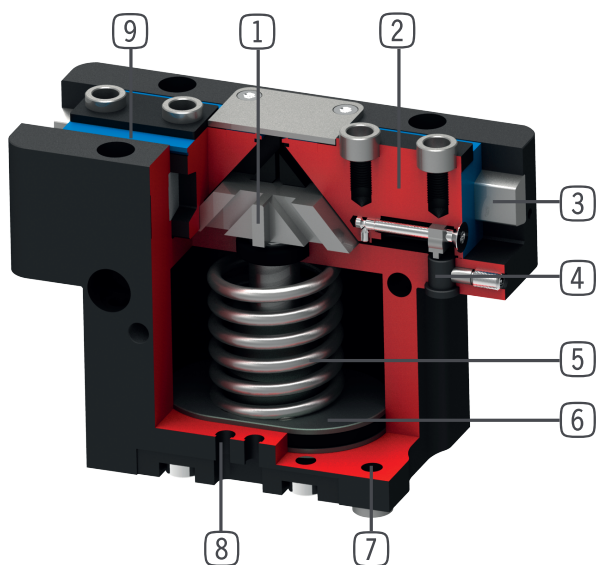
#### HOW TO ORDER CORRECTLY

- ▶ The product order numbers are arranged according to this diagram:

Order no.	GPP5010	<input type="checkbox"/>	<input type="checkbox"/>	- <input type="checkbox"/>	-A
Basis version	N				
High force	S				
For external gripping, self-locking, spring closing			C		
For internal gripping, self-locking, spring opening			O		
temperature-resistant version to 130 °C					20
Protector version IP67 for use in adverse environments (with purged air)					21
temperature-resistant protector version IP67 for use in adverse environments (with purged air) to 130 °C					24

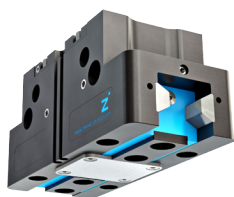


## ► BENEFITS IN DETAIL



- ① **Wedge hook mechanism**
  - Supports to absorb high forces and moments
  - Synchronized gripper jaw movement
- ② **Gripper jaw**
  - Gripper fingers mounted using removable centring sleeves
  - Lubricated for life via incorporated lubrication slots
- ③ **Steel Linear Guide**
  - Steel in steel guide
  - Enables use of extremely long gripper fingers
- ④ **Mounting block**
  - mounting for inductive proximity switch
- ⑤ **Integrated gripping force safety device**
  - Spring built into cylinder chamber as an energy store
- ⑥ **Drive**
  - Double-acting pneumatic rotor cylinder
- ⑦ **Mounting and positioning**
  - Alternatively, on several sides for customized mounting
  - Pneumatic and electrical versions identical apart from height
- ⑧ **Sensing slot**
  - mounting and positioning of magnetic field sensors
- ⑨ **Dual lip seal**
  - IP64 and up to IP67 (with purged air) for Protector version
  - Prevents grease from being squeezed out, increasing service life

## ► SERIES CHARACTERISTICS



Number of installation sizes	11
Stroke per jaw	2,5 mm - 45 mm
Gripping force	140 N - 26950 N
Weight	0,08 kg - 41,5 kg
AP class	5



30 million maintenance-free cycles (max.)



High-strength S



IP67



Temperature-resistant



Spring closing C



Inductive sensor



Corrosion resistance



Purged air



Spring opening O



IP64



Magnetic field sensor