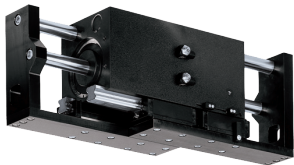


2-JAW PARALLEL GRIPPERS WITH LONG STROKE INSTALLATION SIZE GH7665

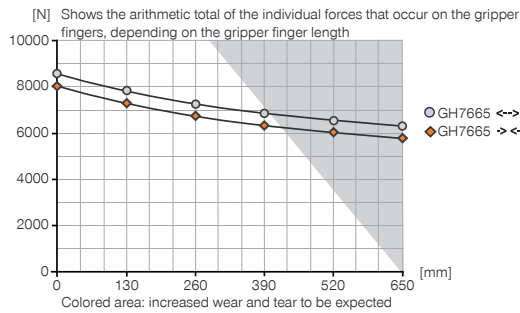
1

Installation size GH7665 / 2-Jaw Parallel Grippers with Long Stroke / pneumatic / Grippers

▶ PRODUCT SPECIFICATIONS

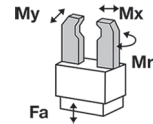


▶ Gripping force diagram



▶ Forces and moments

Displays static forces and moments that can also have an effect, besides the gripping force.



Mr [Nm]	2000
Mx [Nm]	2000
My [Nm]	1500
Fa [N]	4000

▶ INCLUDED IN DELIVERY



Mounting block

KB8-28



Flow Control Valves - with Swivel joint

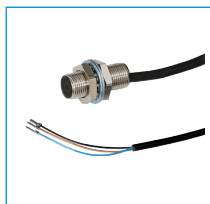
DRV1-4X8

▶ RECOMMENDED ACCESSORIES



Alternate proximity bracket

KHA7665-8



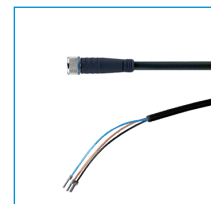
Inductive proximity switch - Cable 5 m

NJ8-E2



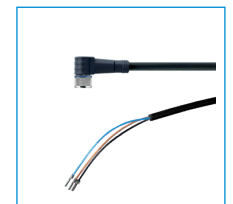
Inductive proximity switch - Connector M8

NJ8-E2S



Plug-in connector Straight Cable 5m - Socket M8 (female)

KAG500



Plug-in connector Angled Cable 5m - Socket M8 (female)

KAW500



Plug-in connector customizable Straight - Connector M8

S8-G-3



Plug-in connector customizable Straight - Connector M12

S12-G-3

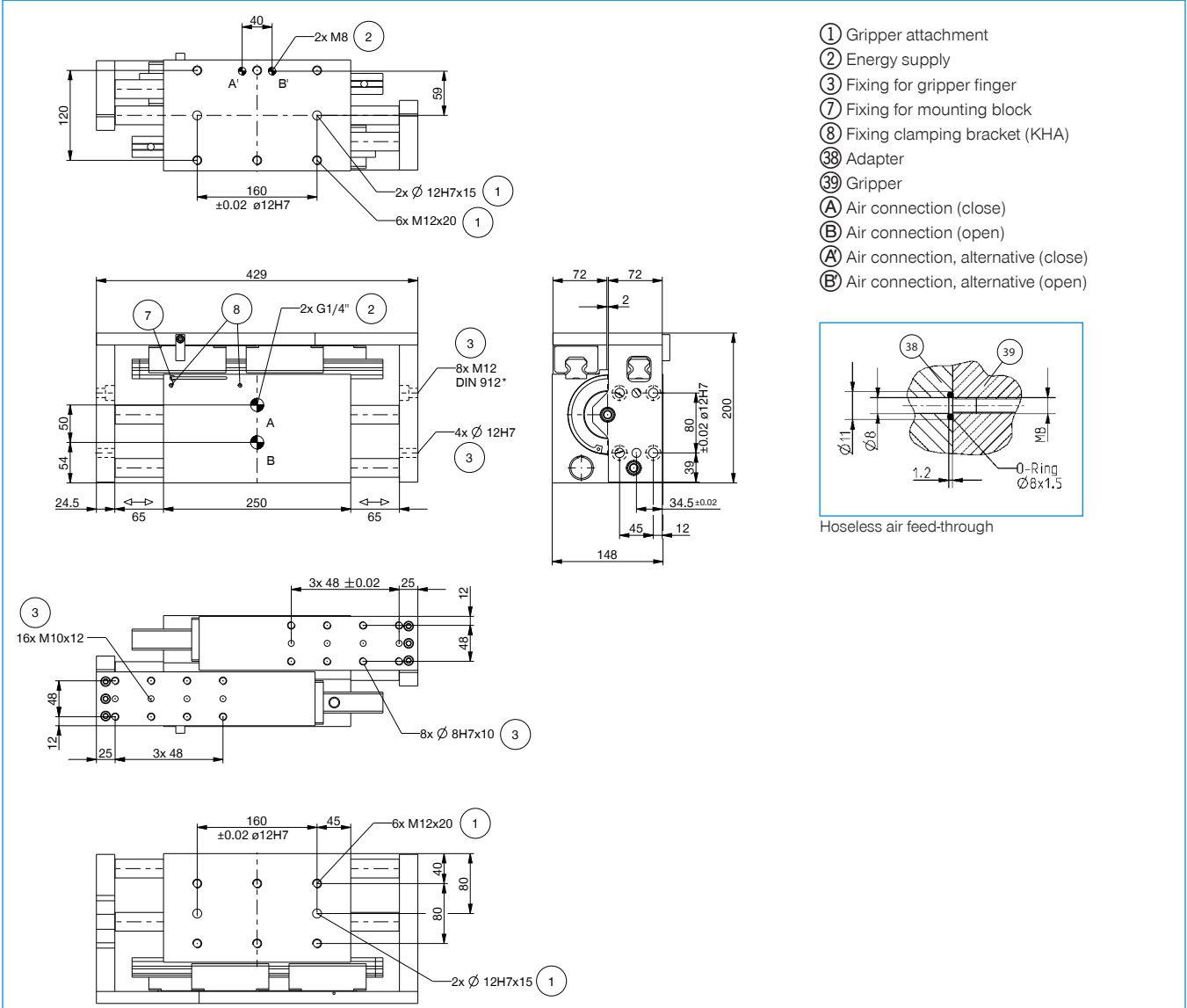


Pressure Safety Valve

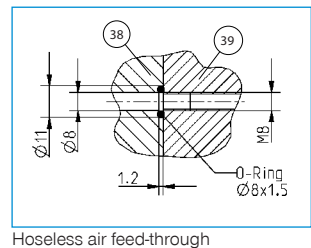
DSV1-8

Order no.	▶ Technical Data*
Stroke per jaw [mm]	65
Gripping force in closing [N]	8000
Gripping force in opening [N]	8500
Closing time [s]	1.1
Opening time [s]	1.1
Repetition accuracy +/- [mm]	0.05
Operating pressure min. [bar]	3
Operating pressure max. [bar]	8
Operating temperature min. [°C]	5
Operating temperature max. [°C]	+80
Air volume per cycle [cm³]	1985
Weight [kg]	31

*All data measured at 6 bar

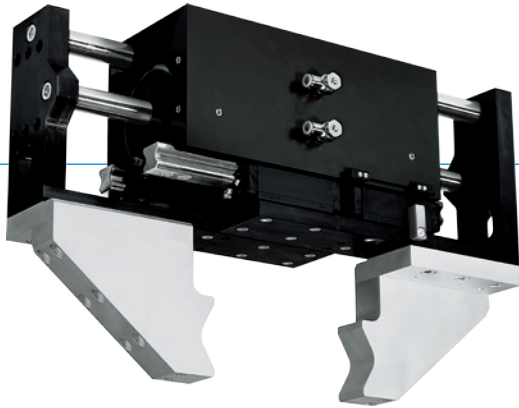


- ① Gripper attachment
- ② Energy supply
- ③ Fixing for gripper finger
- ⑦ Fixing for mounting block
- ⑧ Fixing clamping bracket (KHA)
- ③⑧ Adapter
- ③⑨ Gripper
- A Air connection (close)
- B Air connection (open)
- A Air connection, alternative (close)
- B Air connection, alternative (open)



2-JAW PARALLEL GRIPPERS WITH LONG STROKE SERIES GH7000

▶ PRODUCT ADVANTAGES



“The strong”

▶ High gripping force

The high gripping force allows you to handle the heaviest workpieces in your application reliably

▶ High moment load

The heavy-duty linear guide provides the highest possible durability for your application

▶ Failure-free continuous operation

Our uncompromising „Made in Germany“ quality guarantees up to 10 million maintenance-free cycles

▶ THE BEST PRODUCT FOR YOUR APPLICATION



▶ Our products welcome the challenge!

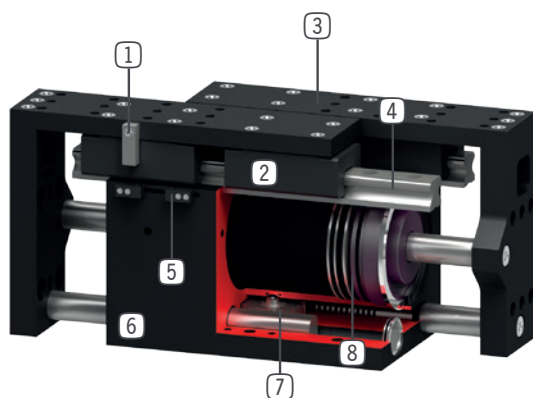
Extreme conditions, all over the world—our tried and tested components and systems give you endless possibilities.

Find the best product for your specific use:

www.zimmer-group.de

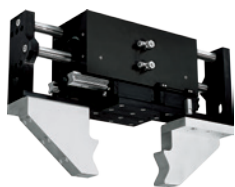


► BENEFITS IN DETAIL



- ① **Switch cam**
 - for position sensing
- ② **Carriage with wiper**
 - for use under extreme conditions
- ③ **Gripper jaw**
 - individual gripper finger mounting
- ④ **Precise linear guide**
 - ideal for highest transverse forces and loads
 - double secured against twisting
- ⑤ **Mounting block adjustable**
 - direct sensing of the gripper jaw position
- ⑥ **Robust, lightweight housing**
 - Hard-coated aluminum alloy
- ⑦ **Synchronization**
 - via rack and pinion
- ⑧ **Drive**
 - two double-acting pneumatic cylinders

► SERIES CHARACTERISTICS



Number of installation sizes	2
Stroke per jaw	65 mm - 100 mm
Gripping force	8500 N - 8500 N
Weight	31 kg - 36 kg
AP class	3



10 million maintenance-free cycles (max.)



Inductive sensor



IP64