

QC75

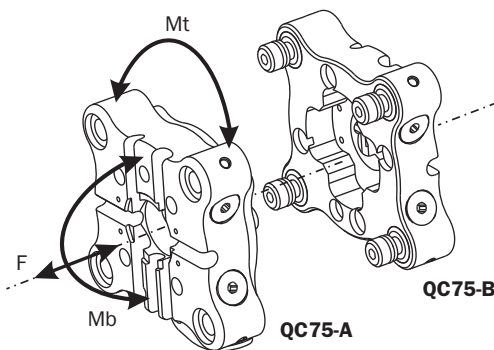
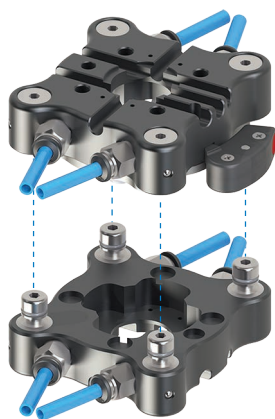
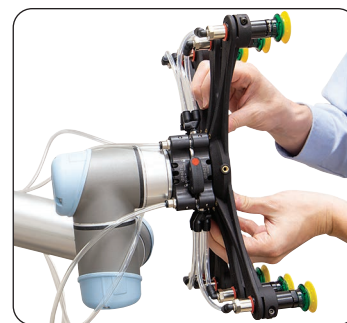
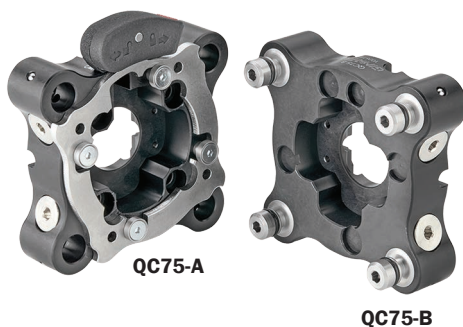
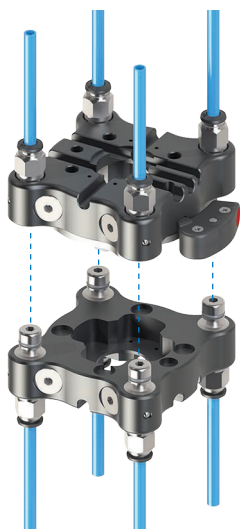
Cambia utensile per robot collaborativi

- Superfici arrotondate.
- Fissaggio ISO-9409-1-50-4-M6.
- Foro passante centrale per le connessioni elettriche opzionali.
- 4 canali dell'aria integrati nelle spine.
- Uscita dei tubi dell'aria in linea o perpendicolare.
- Le due parti (lato robot e lato pinza) sono fornite separatamente.

QC75

Quick changer for collaborative robots

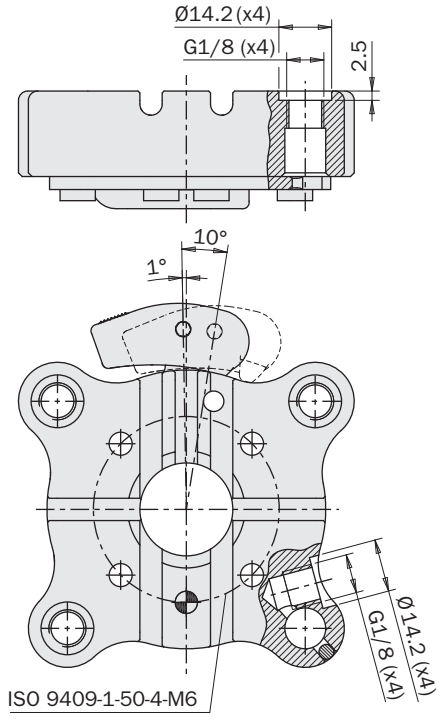
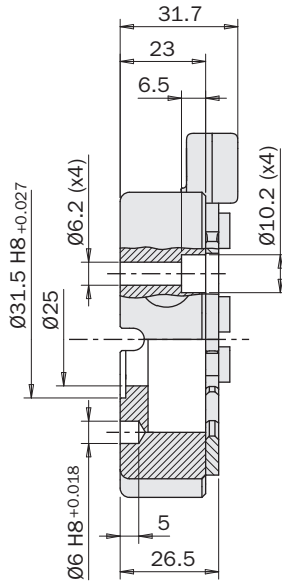
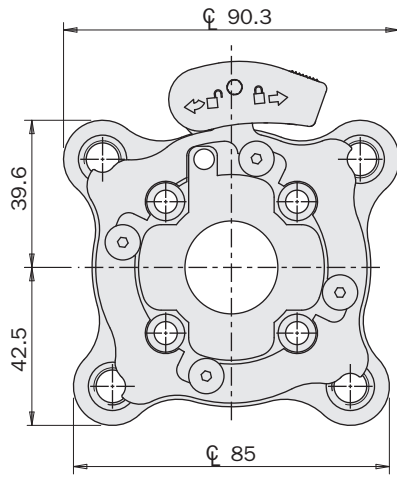
- Rounded surfaces.
- ISO-9409-1-50-4-M6 coupling system.
- Central through hole for optional electric connections.
- 4 built-in air ports in the pins.
- In-line or perpendicular air hose outlet.
- The two parts (robot side and gripper side) are supplied separately.



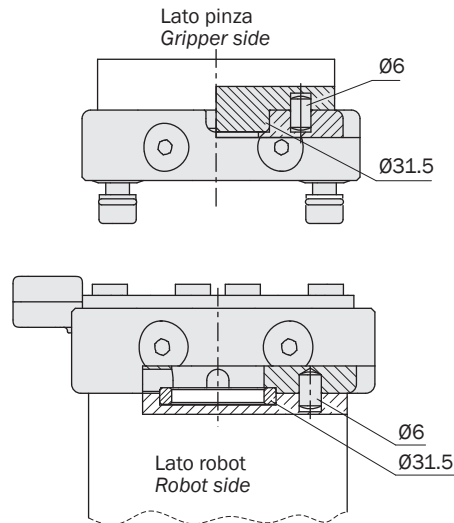
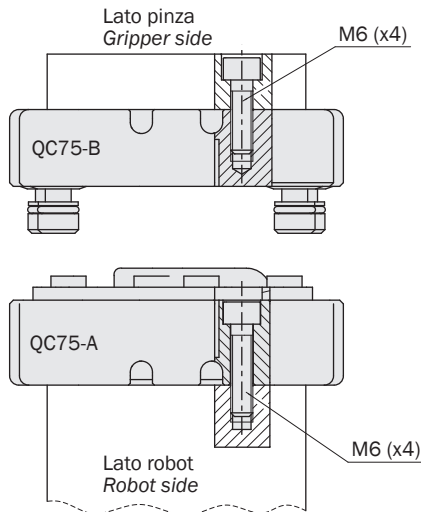
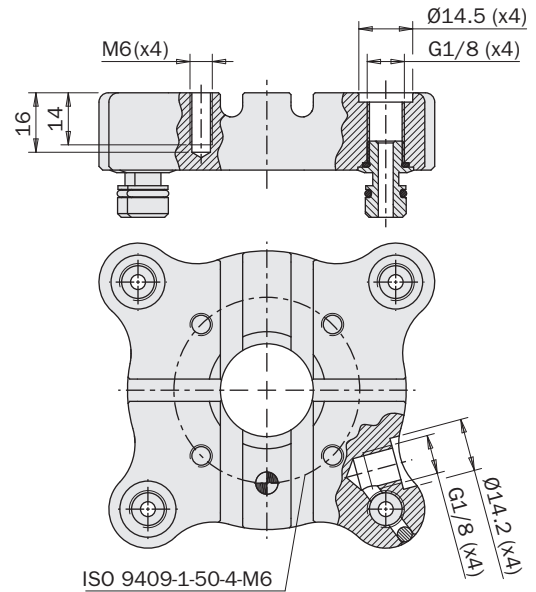
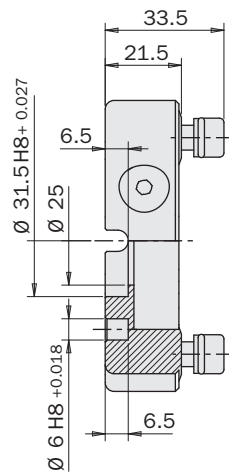
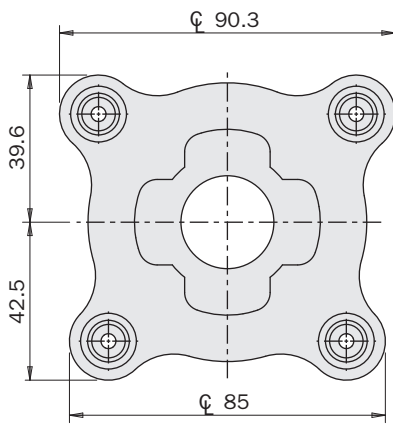
	QC75-A	QC75-B
	Cambia utensile lato robot Quick changer (robot side)	Cambia utensile lato pinza Quick changer (gripper side)
Fluido Medium	Aria compressa a norma ISO 8573-1:2010 [7:4:4] Compressed air in compliance with ISO 8573-1:2010 [7:4:4]	
Pressione di esercizio Pressure range	-1 ÷ 8 bar	
Temperatura di esercizio Temperature range	5 ÷ 60 °C	
Peso Weight	300 g	260 g
F	1000 N	
Mt	100 Nm	
Mb	50 Nm	
Massimo carico raccomandato Maximum recommended load	10 Kg	

Dimensioni (mm)
Dimensions (mm)

QC75-A



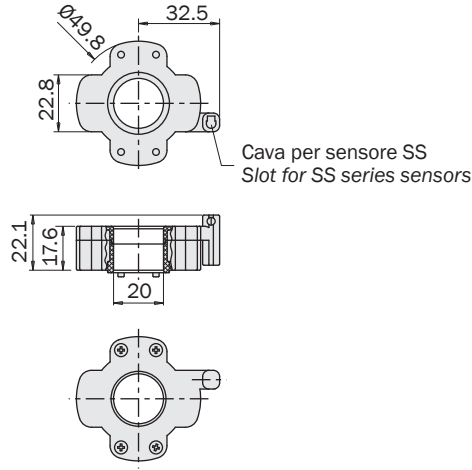
QC75-B



CSAQC (Lato robot)

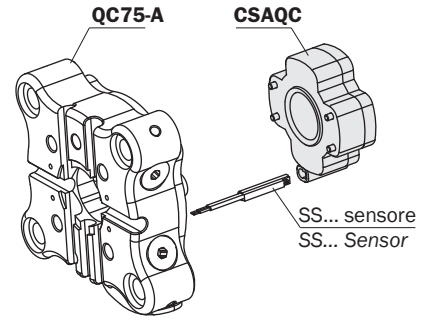
- Scatola porta sensore per la conferma dell'aggancio.

	CSAQC
Peso	15 g
Weight	



CSAQC (Robot side)

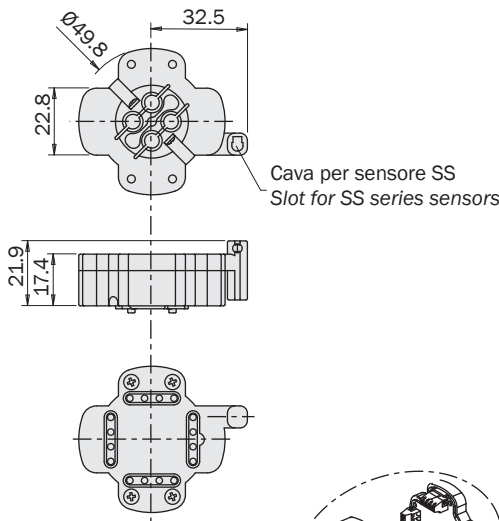
- Sensor holding box for the locking confirmation.



CMAQC (Lato robot) + CMBQC (Lato pinza)

- Le due parti sono fornite separatamente.
- 16 connessioni elettriche configurabili con morsettiere.
- 16 connettori a molla.
- Sede sensore per la conferma dell'aggancio in CMAQC.

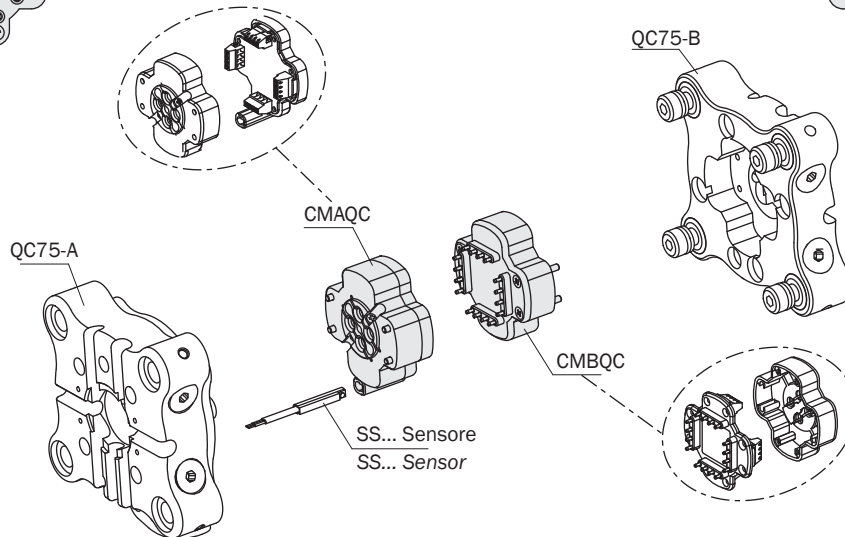
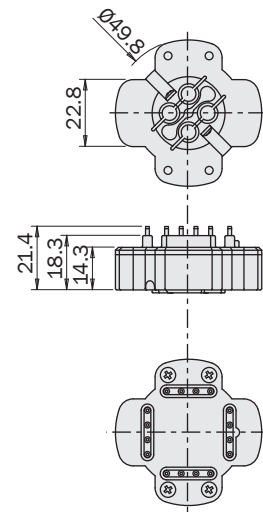
	CMAQC
Peso	19 g
Weight	



CMAQC (Robot side) + CMBQC (Gripper side)

- The two parts are supplied separately.
- 16 reconfigurable electric lines with screw terminals.
- 16 spring connectors.
- Sensor slot for the locking confirmation in CMAQC.

	CMBQC
Peso	19 g
Weight	



CRAQC (Lato robot) + CRBQC (Lato pinza)

- Le due parti sono fornite separatamente.
- 16 connessioni elettriche precablate a disposizione.
- 16 connettori a molla.
- Sede sensore per la conferma dell'aggancio in CRAQC.
- Lettore RFID precabato (2 cavi aggiuntivi da 8 poli) in CRAQC.
- TAG in CRBQC per il riconoscimento della pinza.

CRAQC (Robot side) + CRBQC (Gripper side)

- The two parts are supplied separately.
- 16 available prewired electric lines.
- 16 spring connectors.
- Sensor slot for the locking confirmation in CRAQC.
- RFID prewired (2 additional 8-pole cables) reader in CRAQC.
- TAG in CRBQC for the gripper recognition.

CRAQC	
Peso Weight	140 g

CRBQC	
Peso Weight	80 g

