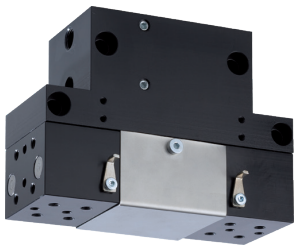


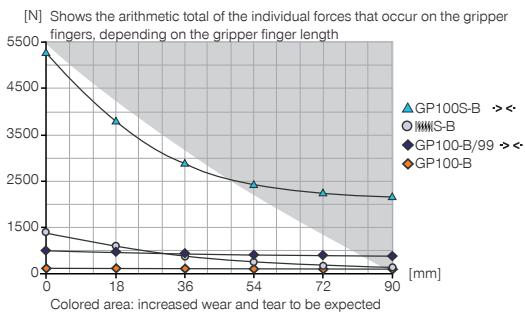
# 2-JAW PARALLEL GRIPPERS

## INSTALLATION SIZE GP100

### ▶ PRODUCT SPECIFICATIONS

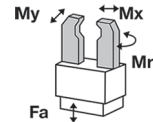


#### ▶ Gripping force diagram



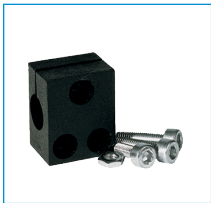
#### ▶ Forces and moments

Displays static forces and moments that can also have an effect, besides the gripping force.



Mr [Nm]	10
Mx [Nm]	10
My [Nm]	10
Fa [N]	400

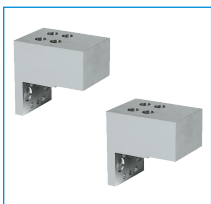
### ▶ INCLUDED IN DELIVERY



Mounting block

KB8K

### ▶ RECOMMENDED ACCESSORIES



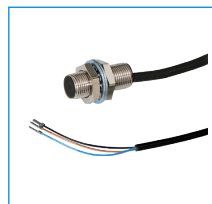
Universal Jaw Aluminium

UB100



Centering Disc

ZE30H7X4



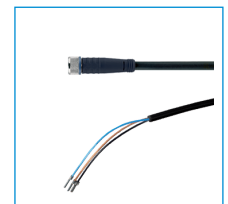
Inductive proximity switch  
- Cable 5m

NJ8-E2



Inductive proximity switch  
- Connector M8

NJ8-E2S



Plug-in connector  
Straight Cable 5m - Socket M8 (female)  
KAG500



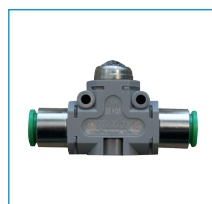
Straight Fittings - Quick Connect Style

GV1-8X6



Angled Fittings - Quick Connect Style

WV1-8X6

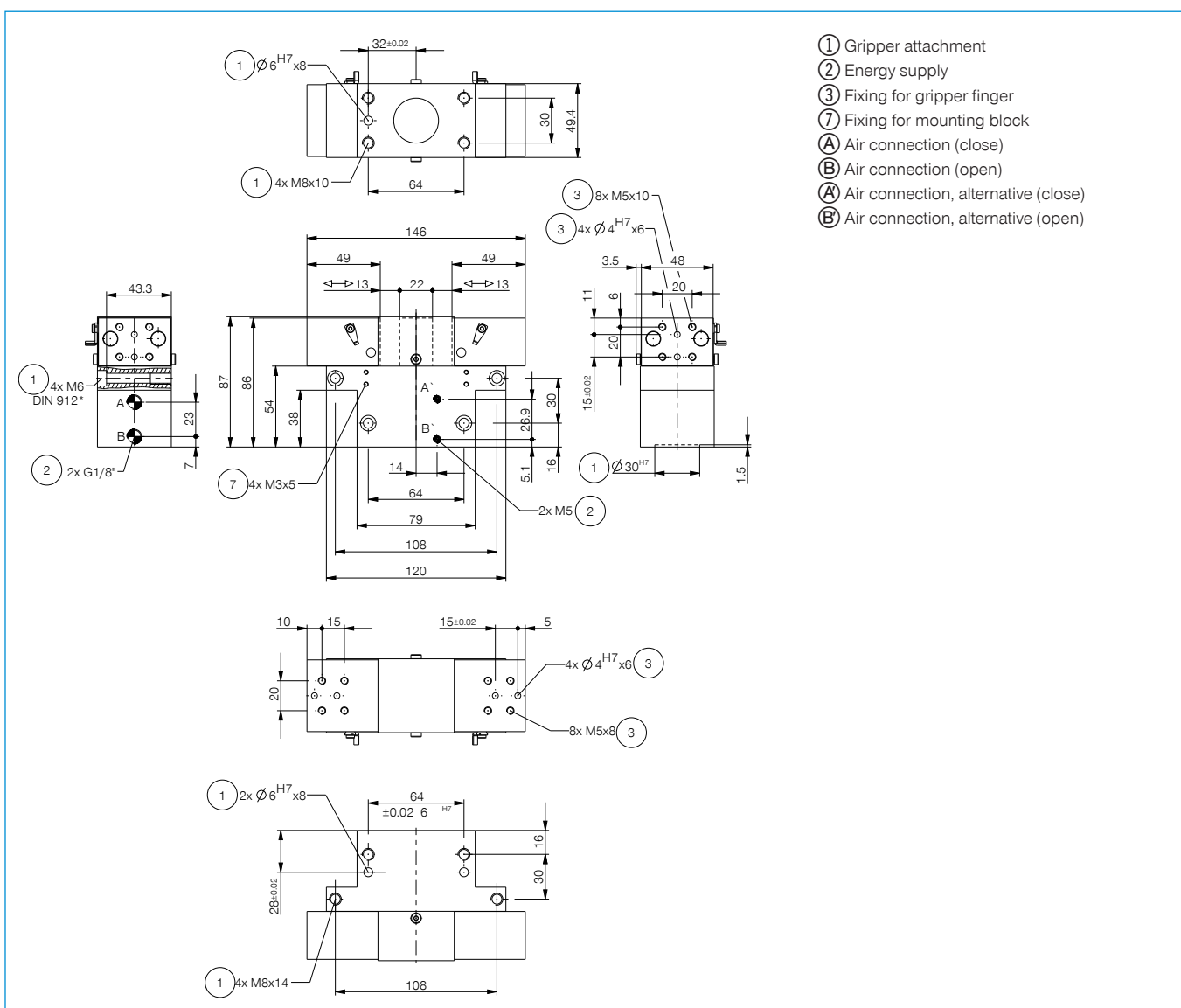


Quick Exhaust Valve

DEV06

Order no.	▶ Technical Data*		
	GP100-B	GP100-B-99	GP100S-B
Stroke per jaw [mm]	13	13	8
Gripping force in closing [N]	450	450	5250
Gripping force in opening [N]		450	
Gripping force secured by spring min. [N]	70		250
Closing time [s]	0.05	0.04	0.05
Opening time [s]	0.05	0.04	0.05
Repetition accuracy +/- [mm]	0.05	0.05	0.05
Operating pressure min. [bar]	5	4	5
Operating pressure max. [bar]	8	8	8
Operating temperature min. [°C]	5	5	5
Operating temperature max. [°C]	+80	+80	+80
Air volume per cycle [cm³]	30	30	30
Weight [kg]	1.4	1.4	1.4

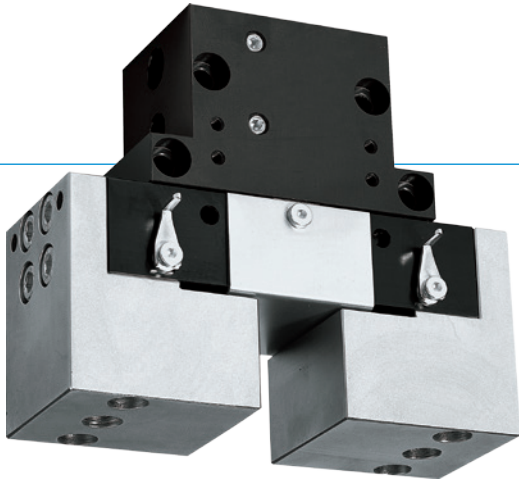
\*All data measured at 6 bar



# 2-JAW PARALLEL GRIPPERS

## SERIES GP

### ▶ PRODUCT ADVANTAGES



#### “The enduring”

##### ▶ Proven technology

We have more than 20 years of proven reliability, which ensures uninterrupted production for you

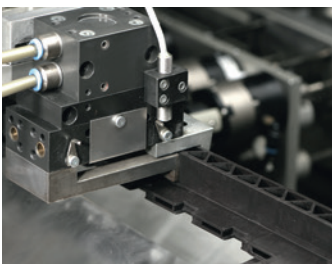
##### ▶ Very short cycle times

Low-friction circular guides enable very short cycle times and, therefore, high component output for your machine

##### ▶ Failure-free continuous operation

Our uncompromising „Made in Germany“ quality guarantees up to 10 million maintenance-free cycles

### ▶ THE BEST PRODUCT FOR YOUR APPLICATION



##### ▶ Our products welcome the challenge!

Extreme conditions, all over the world—our tried and tested components and systems give you endless possibilities.

Find the best product for your specific use:

[www.zimmer-group.de](http://www.zimmer-group.de)

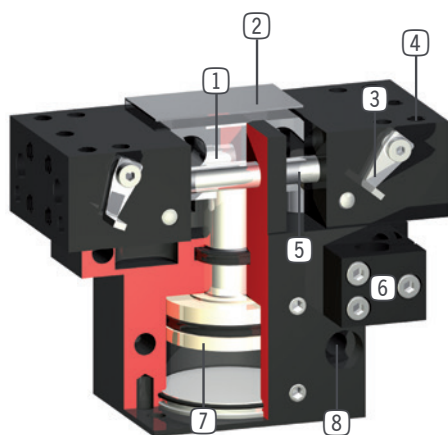
#### HOW TO ORDER CORRECTLY

- ▶ The product order numbers are arranged according to this diagram:

<b>Order no.</b>	<b>GP45</b>	<input type="checkbox"/>	<b>-B</b>	
For external gripping, self-locking, spring closing		<b>S</b>		
Without intergrated spring				<b>-99</b>



## ► BENEFITS IN DETAIL



- ① **Wedge hook mechanism**
  - synchronized the movement of the gripper jaws
  - high force transfer
- ② **Cover plate**
  - to protect the guide and mechanics (from GP45)
- ③ **Adjustable switch cam**
  - for position sensing
- ④ **Gripper jaw**
  - individual gripper finger mounting
- ⑤ **Roller slide**
  - for low wear movement sequence
- ⑥ **Mounting block**
  - mounting for inductive proximity switch
- ⑦ **Drive**
  - double-acting pneumatic cylinder
- ⑧ **Mounting and positioning**
  - mounting possible from several sides for versatile positioning

## ► SERIES CHARACTERISTICS



Number of installation sizes	6
Stroke per jaw	3 mm - 13 mm
Gripping force	4 N - 5250 N
Weight	0,033 kg - 1,4 kg
AP class	2



10 million maintenance-free cycles (max.)



Spring closing C



Inductive sensor



IP30