

HT-3000-S Series

HT-3000-S-M Monochrome

HT-3000-S-C Color



HT-3000-S: 10GigE camera with Sony Pregius IMX252

HT-3000-S utilizes the Sony Pregius IMX252 1/1.8" sensor. Benefits include high sensitivity, high frame rate, low noise, and high picture quality. At full resolution (2048 x 1536), you get 216 frames per second. With its 10GigE RJ45 interface, sleek smaller case and CAT6A connection, this camera has the familiarity of GigE but with 10x the speed. Using CAT6A cabling, you can get cable lengths from 1 meter up to 100 meters. The HT-3000-S offers multi-camera synchronization at <math><1\mu s</math>, low CPU overhead, and excellent price-performance ratio.

Benefits

- » High-speed 10GigE RJ45
- » 10x the speed of GigE
- » Ultra high data/frame rates
- » GigE Vision® and GenICam™ compliant

Applications

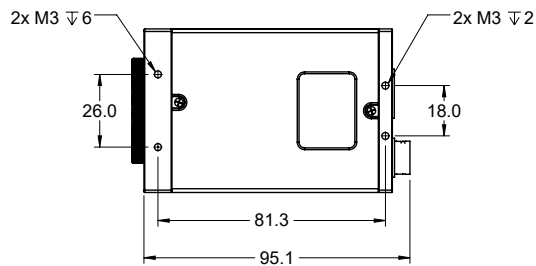
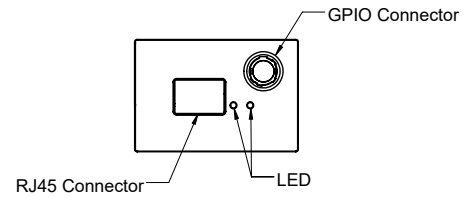
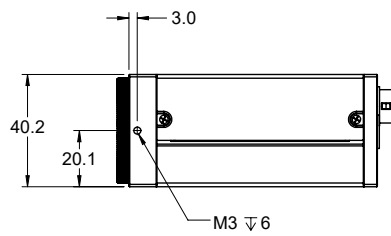
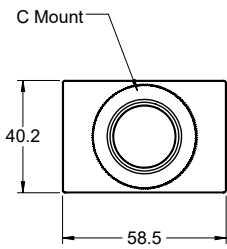
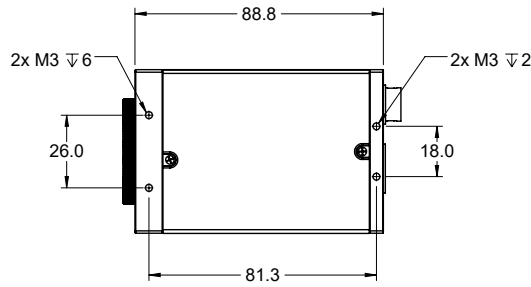
- » Metrology
- » Production Lines
- » Microscopy Imaging

Specifications

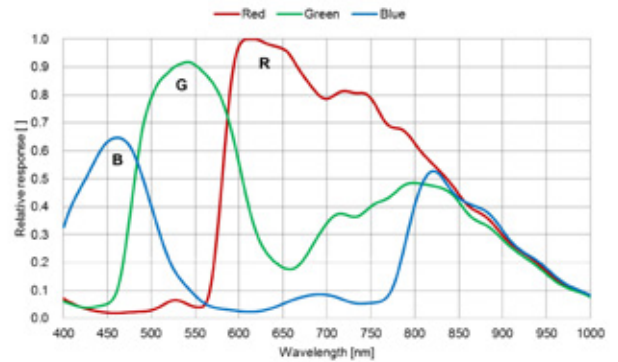
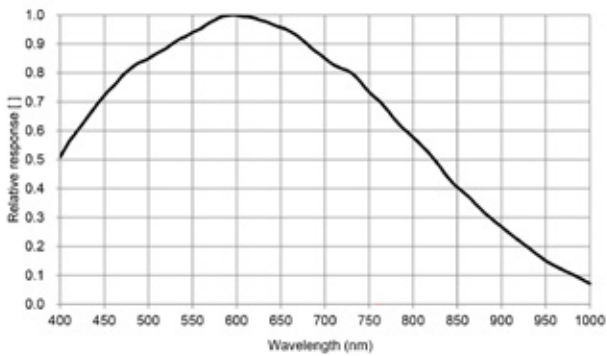
Sensor	IMX252LLR IMX252LQR
Resolution	2048 x 1536
Megapixels	3.2MP
Sensor Type	1/1.8" CMOS
Max Frame Rate	216fps
Cell Size	3.45x3.45μm
Standard Mount	C Mount
Shutter	Global
Bit Depth	8 & 12 bit
GPIO / Triggering	3 in, 3 out Software, External (Pulse or Edge)
Interface	10GigE RJ45
Exposure/Integration*	10μs-1s
Dynamic Range	71 dB
Monochrome Modes	Mono8, Mono12, Mono12Packed
Color Modes	RGB8, BGR8, YUV411, YUV422, YUV444
Raw Modes	BayerRG8, BayerRG12, BayerRG12Packed
Operating System	Win7/8/10 (64 bit), Linux (64 bit)
Compliance	CE, FCC, RoHS, WEEE, GigE Vision, GenICam
Power Requirements	9W, 12V
Operating Temperature	0C - 45C
Storage Temperature	-30C to +60C
Dimensions & Weight	88 x 58 x 39 - 275g
Warranty	2 Years

*all minimum exposure specs can vary from what is listed based on the limitations of each sensor as per notice from the manufacturer.

Mechanical drawings



Spectral Sensitivity



Any Questions?

1-866-780-6082

sales@emergentvisiontec.com