

HT-1800-S Series

HT-1800-S-M Monochrome

HT-1800-S-C Color



HT-1800-S: 10GigE camera with Sony Pregius IMX425

HT-1800-S features the Sony Pregius IMX425 sensor. At full resolution (1604 x 1100) you get up to 660 frames per second. With its 10GigE RJ45 interface, sleek smaller case and CAT6A connection, this camera has the familiarity of GigE but with 10x the speed. Using CAT6A cabling, you can get cable lengths from 1 meter up to 100 meters. The HT-1800-S offers multi-camera synchronization at <math><1\mu s</math>, low CPU overhead, and excellent price-performance ratio.

Benefits

- » High-speed 10GigE RJ45
- » 10x the speed of GigE
- » Ultra high data/frame rates
- » GigE Vision® and GenICam™ compliant

Applications

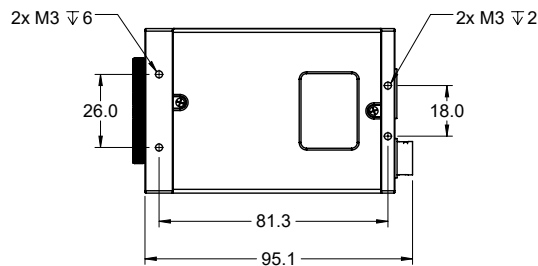
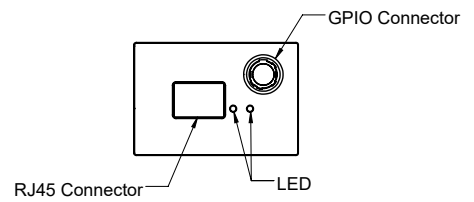
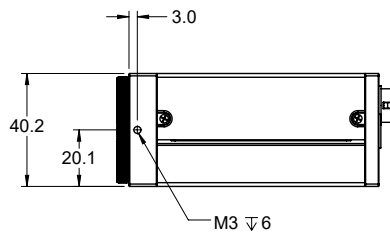
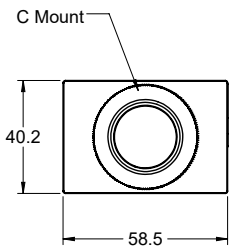
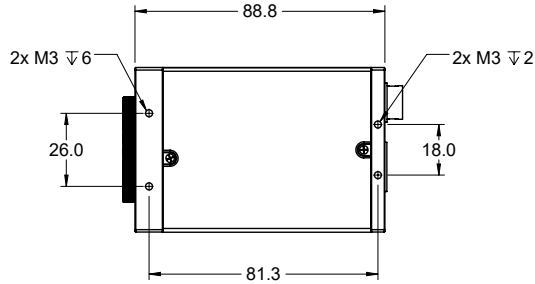
- » Immersive 3D Content
- » Finish Line Vision
- » Referee Assist

Specifications

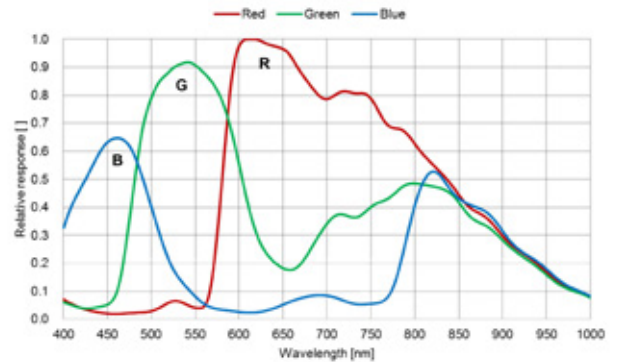
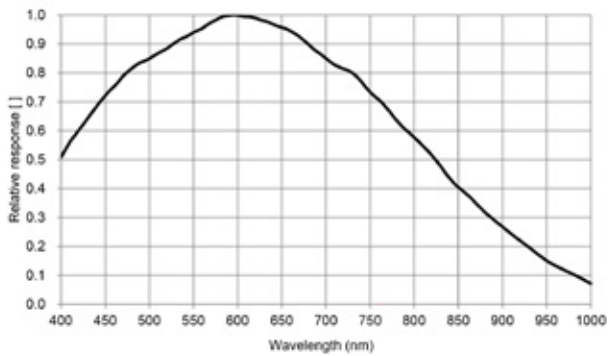
Sensor	IMX425
Resolution	1604 x 1100
Megapixels	1.76MP
Sensor Type	1.1" - 17.6mm CMOS
Max Frame Rate	660fps @ 8-bit 460fps @ 12-bit
Cell Size	9x9µm
Standard Mount	C Mount
Shutter	Global
Bit Depth	8 & 12 bit
GPIO / Triggering	3 in, 3 out Software, External (Pulse or Edge)
Interface	10GigE RJ45
Exposure/Integration*	5µs-1s
Dynamic Range	86 dB
Monochrome Modes	Mono8, Mono12, Mono12Packed
Color Modes	RGB8, BGR8, YUV411, YUV422, YUV444
Raw Modes	BayerRG8, BayerRG12, BayerRG12Packed
Operating System	Win10 (64 bit), Linux (64 bit)
Compliance	CE, FCC, RoHS, WEEE, GigE Vision, GenICam
Power Requirements	9W, 12V
Operating Temperature	0C - 45C
Storage Temperature	-30C to +60C
Dimensions & Weight	88 x 58 x 39 - 275g
Warranty	2 Years

*all minimum exposure specs can vary from what is listed based on the limitations of each sensor as per notice from the manufacturer.

Mechanical drawings



Spectral Sensitivity



Any Questions?

1-866-780-6082

sales@emergentvisiontec.com