

# HT-12000-SB Series

**HT-12000-SB-M Monochrome**

**HT-12000-SB-C Color**

| Back-illuminated pixel structure



**GiG**  
VISION

**GEN<i>CAM**

**Pregius S**

## HT-12000-SB: 10GigE camera with Sony Pregius S IMX535

HT-12000-SB features the Sony Pregius S IMX535 sensor. The Sony Pregius S technology features back-illuminated pixel structure that delivers distortion-free, high imaging performance and miniaturization. At full resolution (4096 x 3000) you get up to 100 frames per second. With its 10GigE RJ45 interface, sleek smaller case and CAT6A connection, this camera has the familiarity of GigE but with 10x the speed. Using CAT6A cabling, you can get cable lengths from 1 meter up to 100 meters. The HT-12000-SB offers multi-camera synchronization at <math><1\mu s</math>, low CPU overhead, and excellent price-performance ratio.

### Benefits

- » High-speed 10GigE RJ45
- » 10x the speed of GigE
- » Ultra high data/frame rates
- » GigE Vision® and GenICam™ compliant
- » Back-illuminated pixel structure

### Applications

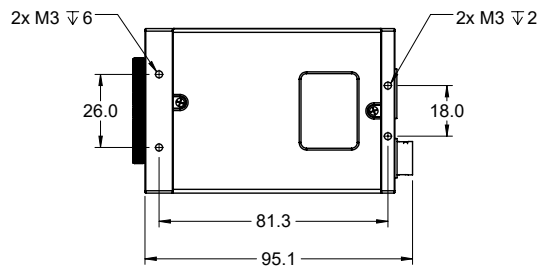
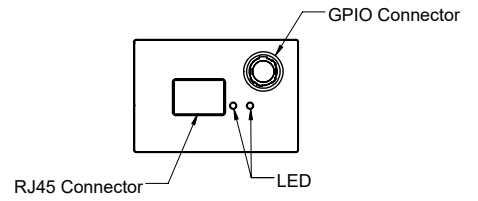
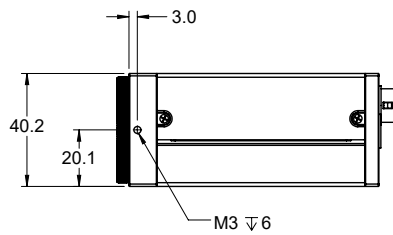
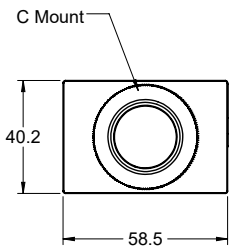
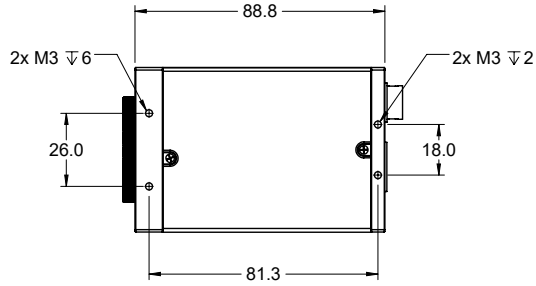
- » Industrial Inspection
- » Automation
- » Intelligent Transportation Systems
- » Logistics
- » Virtual Reality
- » Volumetric Capture
- » Referee Assist

### Specifications

|                       |  |
|-----------------------|--|
| Sensor                | IMX535   |
| Resolution            | 4096 x 3000  |
| Megapixels            | 12.4MP   |
| Sensor Type           | 1/1.1" CMOS  |
| Max Frame Rate        | 100fps @ 8-bit<br>65fps @ 12-bit                     |
| Cell Size             | 2.74x2.74µm  |
| Standard Mount        | C Mount  |
| Shutter               | Global   |
| Bit Depth             | 8 & 12 bit   |
| GPIO / Triggering     | 3 in, 3 out<br>Software, External<br>(Pulse or Edge) |
| Interface             | 10GigE RJ45  |
| Exposure/Integration* | 5µs-1s   |
| Dynamic Range         | 74 dB  |
| Monochrome Modes      | Mono8, Mono12, Mono12Packed                          |
| Color Modes           | RGB8, BGR8, YUV411, YUV422, YUV444                   |
| Raw Modes             | BayerRG8, BayerRG12, BayerRG12Packed                 |
| Operating System      | Win10 (64 bit), Linux (64 bit)                       |
| Compliance            | CE, FCC, RoHS, WEEE, GigE Vision, GenICam            |
| Power Requirements    | 9W, 12V  |
| Operating Temperature | 0C - 45C   |
| Storage Temperature   | -30C to +60C   |
| Dimensions & Weight   | 88 x 58 x 39 - 275g                                  |
| Warranty              | 2 Years  |

\*all minimum exposure specs can vary from what is listed based on the limitations of each sensor as per notice from the manufacturer.

## Mechanical drawings



**Any Questions?**

1-866-780-6082

sales@emergentvisiontec.com